

RM RAIL FASTENING SYSTEMS

RM 011 RAIL CLIPS

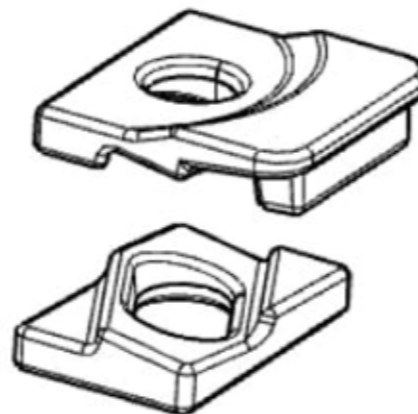
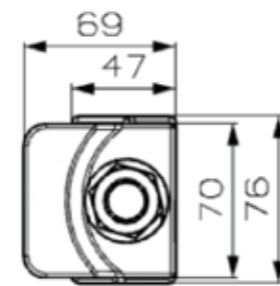
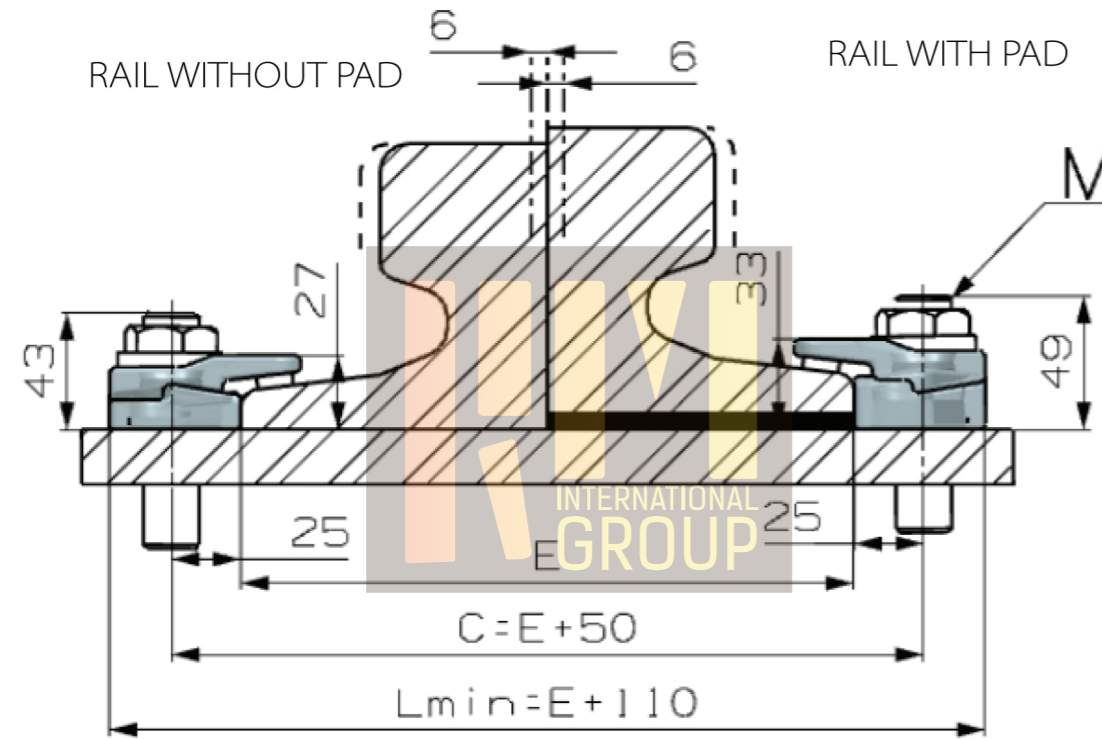
TECHNICAL SPECIFICATIONS

Max side load 90 KN
Lateral adjustmen 6
Torque tightening 320 Nm
Steel Quality St52-3

FEATURES

Main features:

- * Elastic fixing of rails with or without pad;
- * System made up of two interacting elements that allow an easy adjustment of the rail;
- * Easy maintenance;
- * The elastomer nose increases the tolerances of the rail support structure, reduces the stress of the connections and allows a better fixing of the rail;
- * The fastening system has been used for years throughout the world in the most demanding conditions with great success.



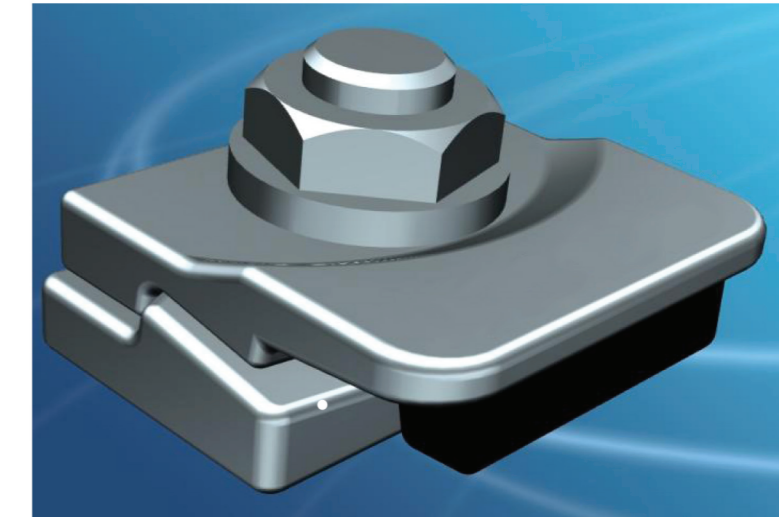
CLIP WITH RUBBER NOSE

APPLICATIONS

The fastening system RM 011 for direct fixing has been studied specifically for crane rails but it can be used with good results also with train and light rails. It is a very rugged, reliable fastening system of contained dimensions. It can be used with any type of crane independently of the

RAIL TYPE	A	B	E	WEIGHT KG/M	WITHOUT PAD	WITH PAD
A 65	65	75	175	43,1	011	011 P
A 75	75	85	200	56,2	011	011 P
A 100	100	95	200	74,3	011	011 P
A 120	120	105	220	100	011	011 P
A150	150	150	220	150,3	011	011 P
CR 104	63,5	127	127	51,59	011	011 P
CR 105	65,1	131,8	131,8	52,09	011	011 P
CR 135	76,2	146	131,8	66,97	011	011 P
CR 171	101,6	152,4	152,4	84,83	011	011 P
MRS 87 A	101,6	152,4	152,4	86,8	011	011 P
CR 175	102,4	152,4	152,4	86,8	011	011 P
MRS 125	120	180	180	125	011	011 P
36 E1	60	130	100	36,26	011	011 P
40 E1	67	138	125	40,95	011	011 P
46 E1	65	145	135	46,9	011	011 P
49 E1	67	149	125	49,39	011	011 P
50 ES	67	148	135	49,9	011	011 P
54 E1	70	159	140	54,77	011	011 P
60 E1	72	172	150	60,21	011	011 P

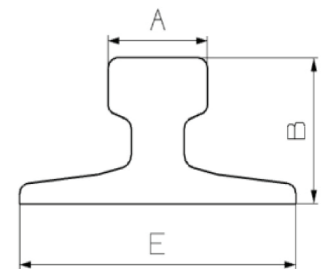
Clip can be used with more type of ralls than those listed. Complete range of the usable rails available on request. Products and specifications could be changed without previous notice.



GENERAL INSTRUCTIONS

The selection of the fastening system, either for crane rails or train or light (Decauville) rails is a rather important decision both when placing a track or a single rail. The wrong selection could have expensive consequences and create serious problems such as;

- * Slow down or shut down of the production process,
- * Excessive and, or irregular wear of the rails,
- * Damage of the mechanical components,
- * Damage of the supporting base,
- * Damage of the fastening systems.



CLIPS NO.	TORQUE TIGHTENING	SIDE LOAD	WEIGHT KG
RM 011	300 Nm	90 KN	0,950
RM 011 P			0,920