

## RM 009 RAIL CLIPS

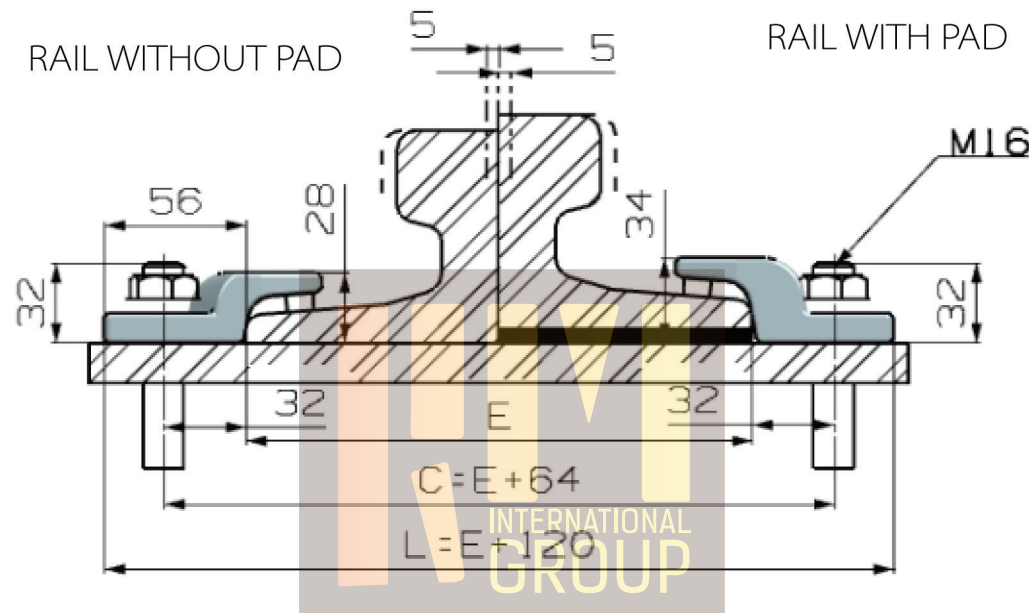
### TECHNICAL SPECIFICATIONS

Max side load 150 KN  
Lateral adjustmen 5  
Torque tightening 360 Nm  
Steel Quality St52-3

### FEATURES

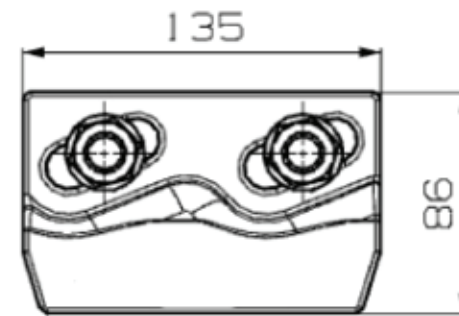
Main features:

- \* Elastic fixing of rails with or without pad;
- \* System made up of two interacting elements that allow an easy adjustment of the rail;
- \* Easy maintenance;
- \* The elastomer nose increases the tolerances of the rail support structure, reduces the stress of the connections and allows a better fixing of the rail;
- \* The fastening system has been used for years throughout the world in the most demanding conditions with great success.



### APPLICATIONS

The fastening system RM 009 for direct fixing has been studied specifically for crane rails but it can be used with good results also with train and light rails. It is a very rugged, reliable fastening system of contained dimensions. It can be used with any type of crane independently of the driving system.



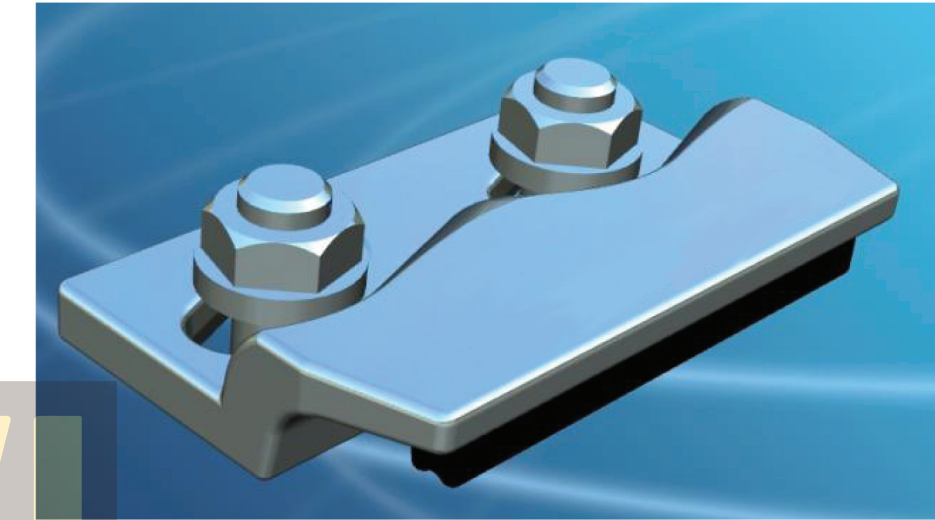
CLIP WITH RUBBER NOSE

## RM RAIL FASTENING SYSTEMS

| RAIL TYPE | A     | B     | E     | WEIGHT KG/M | WITHOUT PAD | WITH PAD |
|-----------|-------|-------|-------|-------------|-------------|----------|
| A 65      | 65    | 75    | 175   | 43,1        | 009         | 009 P    |
| A 75      | 75    | 85    | 200   | 56,2        | 009         | 009 P    |
| A 100     | 100   | 95    | 200   | 74,3        | 009         | 009 P    |
| A 120     | 120   | 105   | 220   | 100         | 009         | 009 P    |
| CR 104    | 63,5  | 127   | 127   | 51,59       | 009         | 009 P    |
| CR 105    | 65,1  | 131,8 | 131,8 | 52,09       | 009         | 009 P    |
| CR 135    | 76,2  | 146   | 131,8 | 66,97       | 009         | 009 P    |
| CR 171    | 101,6 | 152,4 | 152,4 | 84,83       | 009         | 009 P    |
| S 24      | 53    | 115   | 90    | 24,43       | 009         | 009 P    |
| 25 KG/M   | 50    | 115   | 90    | 25          | 009         | 009 P    |
| S 26      | 50    | 110   | 100   | 26,27       | 009         | 009 P    |
| 27 E1     | 50    | 120   | 95    | 27,06       | 009         | 009 P    |
| ANFOR 30  | 56    | 125,5 | 106   | 29,98       | 009         | 009 P    |
| 30 E1     | 60,3  | 108   | 108   | 30,13       | 009         | 009 P    |
| 33 E1     | 58    | 134   | 105   | 33,47       | 009         | 009 P    |
| 36 E1     | 60    | 130   | 100   | 36,26       | 009         | 009 P    |
| 40 E1     | 67    | 138   | 125   | 40,95       | 009         | 009 P    |
| 46 E4     | 65    | 145   | 135   | 46,9        | 009         | 009 P    |
| 49 E1     | 67    | 149   | 125   | 49,39       | 009         | 009 P    |
| 50 ES     | 67    | 148   | 135   | 49,9        | 009         | 009 P    |
| 54 E1     | 70    | 159   | 140   | 54,77       | 009         | 009 P    |

Clip can be used with more type of rails than those listed.  
Complete range of the usable rails available on request.  
Products and specifications could be changed without previous notice.

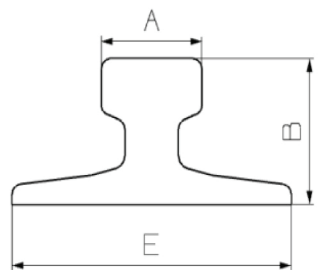
## RM 009 RAIL CLIPS



### GENERAL INSTRUCTIONS

The selection of the fastening system, either for crane rails or train or light (Decauville) rails is a rather important decision both when placing a track or a single rail. The wrong selection could have expensive consequences and create serious problems such as;

- \* Slow down or shut down of the production process,
- \* Excessive and, or irregular wear of the rails,
- \* Damage of the mechanical components,
- \* Damage of the supporting base,
- \* Damage of the fastening systems.



| CLIPS NO. | TORQUE TIGHTENING | SIDE LOAD | WEIGHT KG |
|-----------|-------------------|-----------|-----------|
| RM 009    |                   |           | 1400      |
| RM 009 P  | 360 Nm            | 150 KN    | 1,350     |