

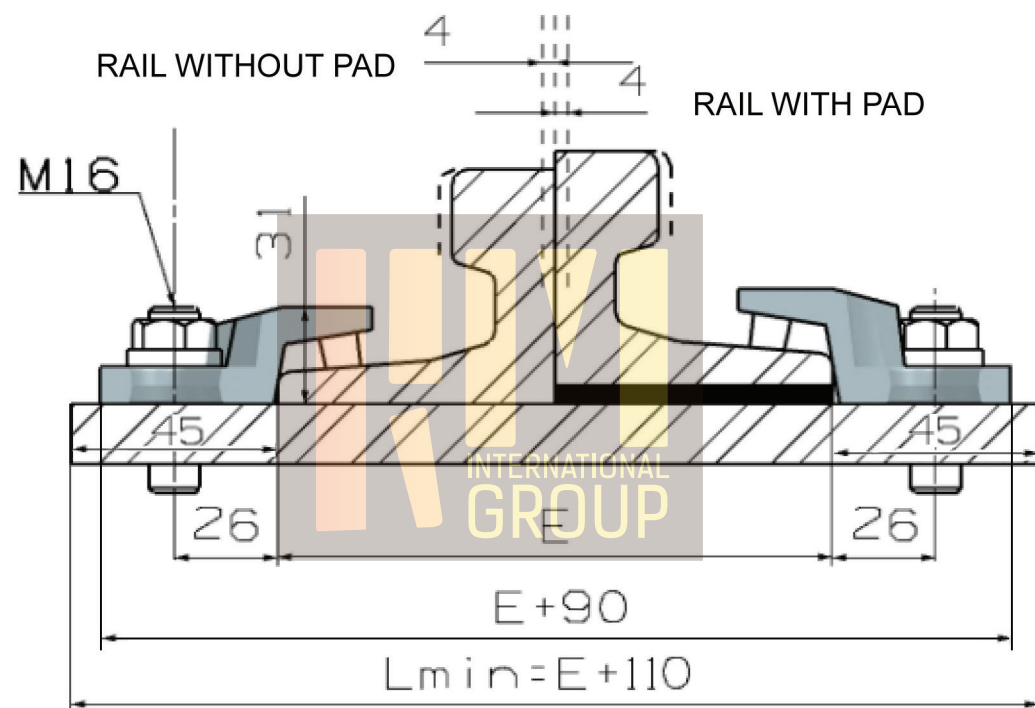
RM 007  
RAIL CLIPS

**TECHNICAL SPECIFICATIONS**

Max side load 60 KN  
Lateral adjustmen 5  
Torque tightening 200 Nm  
Steel Quality St52-3

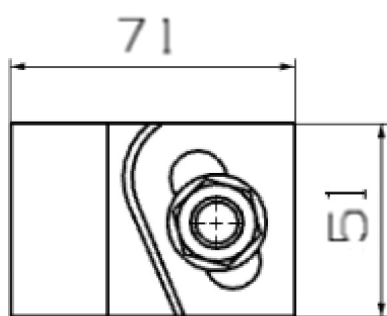
**FEATURES**

**Main features:**  
 \* Elastic fixing of rails with or without pad;  
 \* System made up of two interacting elements that allow an easy adjustment of the rail;  
 \* Easy maintenance;  
 \* The elastomer nose increases the tolerances of the rail support structure, reduces the stress of the connections and allows a better fixing of the rail;  
 \* The fastening system has been used for years throughout the world in the most demanding conditions with great success.



**APPLICATIONS**

The fastening system RM 007 for direct fixing has been studied specifically for crane rails but it can be used with good results also with train and light rails. It is a very rugged, reliable fastening system of contained dimensions. It can be used with any type of crane independently of the driving system.

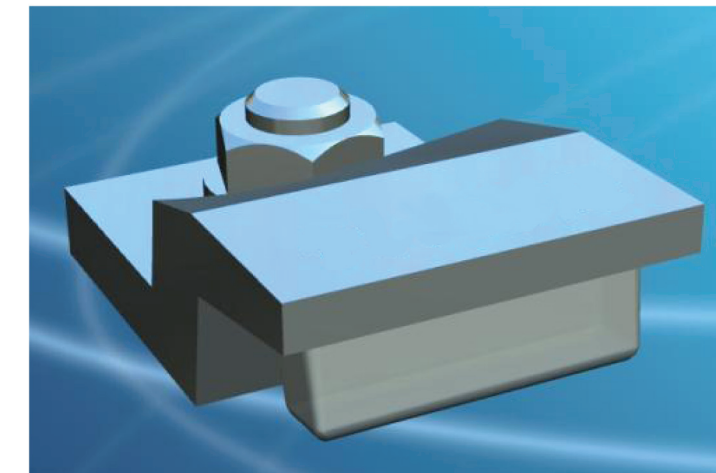


CLIP WITH RUBBER NOSE

**RM RAIL FASTENING SYSTEMS**

RAIL TYPE	A	B	E	WEIGHT KG/M	WITHOUT PAD	WITH PAD
A 45	45	55	125	22,1	007	007 P
A 55	55	65	150	31,8	007	007 P
A 65	65	75	175	43,1	007	007 P
A 75	75	85	200	56,2	007	007 P
A 100	100	95	200	74,3	007	007 P
S 20	44	100	82	19,8	007	007 P
S 24	53	115	90	24,43	007	007 P
25 kg/m	50	115	90	25	007	007 P
S 26	50	110	100	26,27	007	007 P
27 E1	50	120	95	27,06	007	007 P
ANFOR 30	56	125,5	106	29,98	007	007 P
30 E1	60,3	106	108	30,13	007	007 P
33 E1	58	134	105	33,47	007	007 P
36 E1	60	130	100	36,26	007	007 P
40 E1	67	138	125	40,95	007	007 P
46 E4	65	145	135	46,9	007	007 P
49 E1	67	149	125	49,39	007	007 P
50 ES	67	148	135	49,9	007	007 P
54 E1	70	159	140	54,77	007	007 P
60 E1	72	172	150	60,21	007	007 P

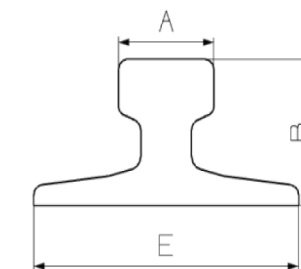
Clip can be used with more type of ralls than those listed. Complete range of the usable rails available on request. Products and specifications could be changed without previous notice.



**GENERAL INSTRUCTIONS**

The selection of the fastening system, either for crane rails or train or light (Decauville) rails is a rather important decision both when placing a track or a single rail. The wrong selection could have expensive consequences and create serious problems such as;

- \* Slow down or shut down of the production process,
- \* Excessive and, or irregular wear of the rails,
- \* Damage of the mechanical components,
- \* Damage of the supporting base,
- \* Damage of the fastening systems.



CLIPS NO.	TORQUE TIGHTENING	SIDE LOAD	WEIGHT KG
RM 007			0,360
RM 007 P	200 Nm	60 KN	0,340