

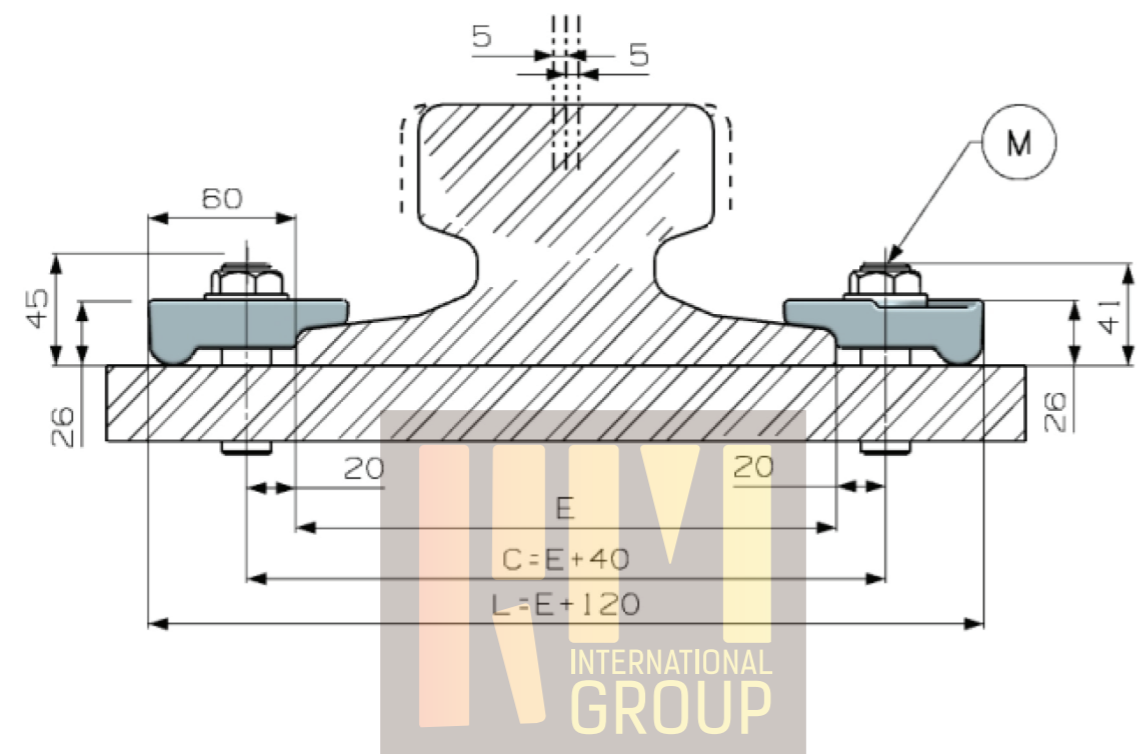
RM 005 WELDED RAIL CLIPS

TECHNICAL SPECIFICATIONS

Max side load 250 KN
Lateral adjustmen 8
Bolt M20 gr 8.8
Torque tightening 275 Nm
Steel Quality St52-3

SPECIFICATIONS

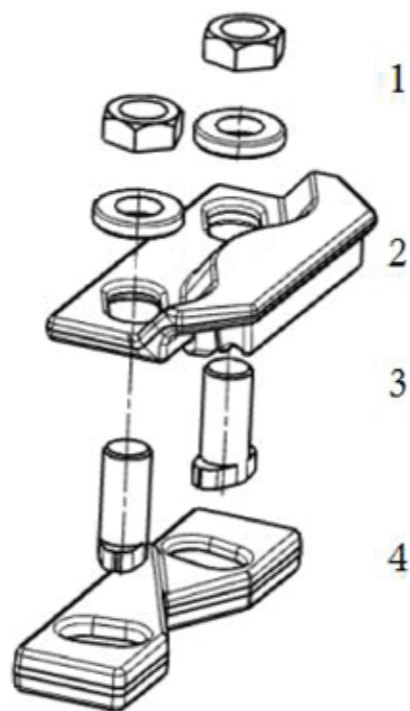
Shore 75 ± 5
Maximum Tensile Strength 12,7 N / mm²
Elongation 255% (200% after aging)
Working Temperature -30° – +110 C°
Vibration Reduction 45% - 50%
Noise Reduction (dbA) 12%
Permanent Set <5% (<20%)



is with great success.

APPLICATIONS

The fastening system RM 005 for indirecting fixing has been studied specifically for crane rail but it can be used with good results also with train rails. It is a very rugged, reliable fastening system of contained dimensions.
-It can be used with any type of crane independently of the



1. Flange nut M20
2. Upper clip with rubber nose
3. Special screw M20
4. Weldable lower clip

RM RAIL FASTENING SYSTEMS

Clip can be with more type of rails than those listed.

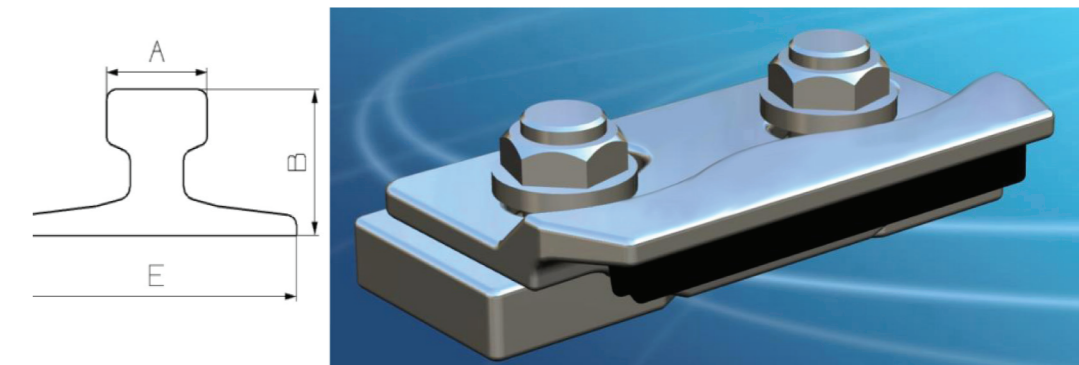
INF.DOT. SPAWANIA	A	B	E	WAGA KG/M	BEZ PODKLADU	Z PODKLADEM
A75	75	85	200	56,2	005	005 P
A100	100	95	200	74,3	005	005 P
A120	120	105	220	100	005	005 P
A150	150	150	220	150,3	005	005 P
CR 104	63,5	127	127	51,59	005	005 P
CR 105	65,1	131,8	131,8	52,09	005	005 P
CR 135	76,2	146	131,8	66,97	005	005 P
CR 171	101,6	152,4	152,4	84,83	005	005 P
MRS 87 A	101,6	152,4	152,4	86,8	005	005 P
CR 175	102,4	152,4	152,4	86,8	005	005 P
MRS 125	120	180	180	125	005	005 P
49 E1	67	149	125	49,39	005	005 P
50 ES	67	148	135	49,9	005	005 P
54 E1	70	159	140	54,77	005	005 P
60 E1	72	172	150	60,21	005	005 P

FEATURES

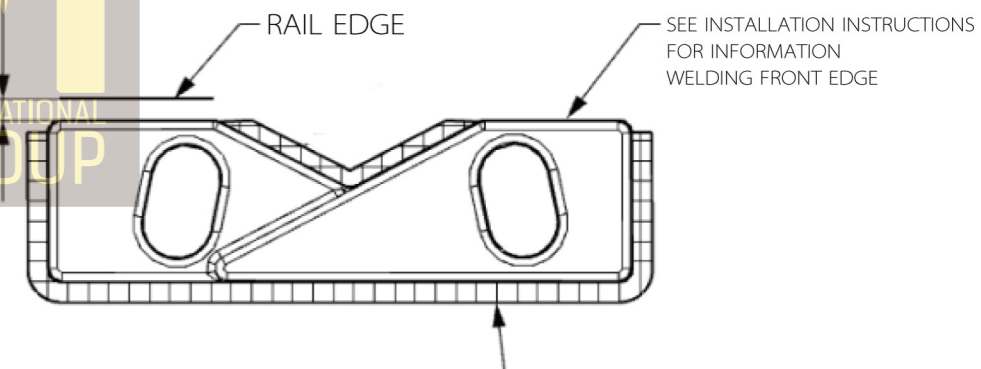
Main features:

- * Elastic fastening of rails with or without pad;
- * System made up of two interacting elements which allow an easy lateral adjustment of the rail;
- * The two parts of the clip are locked together with a bolt and flunged nut;
- * The elastomer nose increases the tolerances of the rail-support structure, reduces the stress of the connections, allows a better fixing of the rail;
- * Welding of the lower part of the clip to the rail support without access difficultles;
- * The fastening system has been used for years throughout the world in the most demanding conditions with great success.

RM 005 WELDED RAIL CLIPS



WELDING DETAILS



INSTALLATION INSTRUCTIONS:

Weld all round the clip base, except the side closest and parallel to the rail, with a 4mm throat thickness fillet weld, using low hydrogen electrodes. Recommended electrodes AWS E7018 or E7028. Clip base is made from weldable grade steel.