



RM INTERNATIONAL GROUP SP. Z O. O.

# Cable trolleys and components series RD



Dear partners!

Here are our new catalogs of our products.

They are the result of our cooperation with partners in Poland, countries of Eastern and Western Europe and the countries of the Customs Union: Russia, Kazakhstan, Belarus.

We always listen out to you needs and desires and respond to you wishes.

We have also offered some innovative solutions for the ease of installation and reduction of equipment costs.

We always offer our guarantee on delivery of all power and data transmission systems for cranes and for all other types of mobile equipment and machinery:

#### Cable trolleys

Light series load up to 10 kg for the trolley

Medium series load up to 65 kg for the trolley

Heavy series load up to 150 kg for the trolley

Heavyweight series load on the trolley above 150 kg

With electrodrive for long runs

#### The conductor bars from 35A to 5000A

Multiterminal conductor bars

System of contact monorail

#### Drag chain systems complete with trays and cables as a unit

Plastic

Metal

Cable reels

Additionally supply:

Rail fastening system: Claws and crane rail pad RAY PAD

Comfortable crane cabs

We recommend high quality cables in accordance with your technical specifications for all our systems.

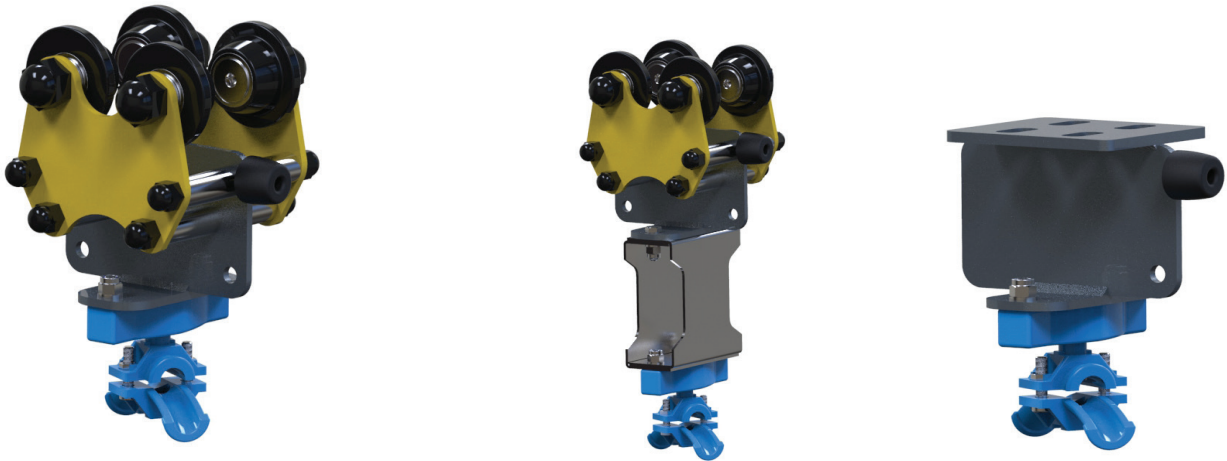
We specialize in manufacturing and supplying of ready-made cable festoon systems, drag chain systems complete with trays and cables as a unit.

We come up with offers of optimal alternative solutions and supplies of equipment in shortest time.

We are always aimed at our partner's supplies and services, and constantly work on improvement of our product quality and service's.

We regard all special tasks as a real challenge for our development

You are always welcome 24 hours 7 days a week.



**Functionality - For the production of cable festoon systems for I-beam types accordant GOST, IPE, INP**

**Material:**

Case	Zinc-galvanized steel S355, Powder painting
Case	RAL 7012
Roller fastening	RAL 1021
	Can be produced of stainless or acid-resistant steel
Rollers	Polyamide or High-strength steel, galvanized
Bearing	spherical ball bearing
Roller	axis Zinc-galvanized steel
Bolt	joint Metric system
Seals	Rubber EPDM
End	cap PCV

**Technical characteristics:**

Maximum load	20 kg
Travel speed	50 m/min
Operating temperature	- 30 ° C and above. Possibly from -40 ° C and below
Min. dimension of beam	80

Please, notice,  
 RM International Group Sp. O.o. reserves the right to introduce modifications into design of any element.

**CT-RD10-130-38**  
**CT-RD10-150-45**

CT-RD Type Cable trolley for round cable

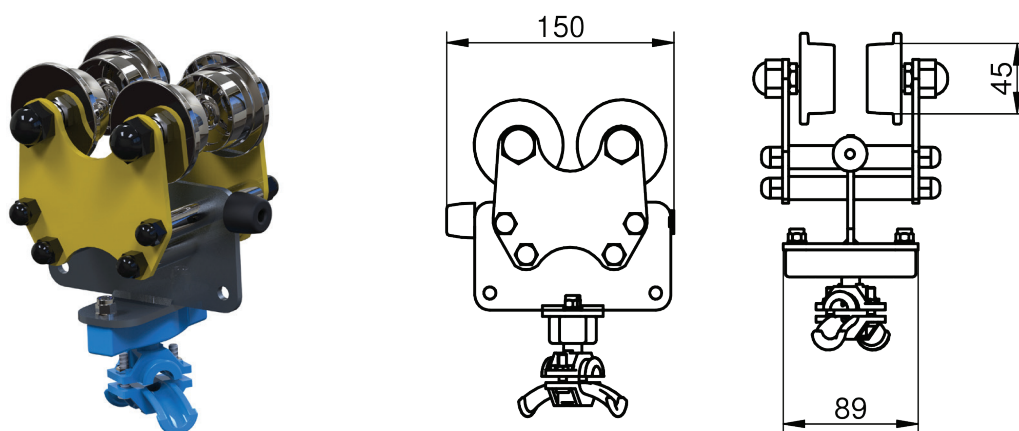
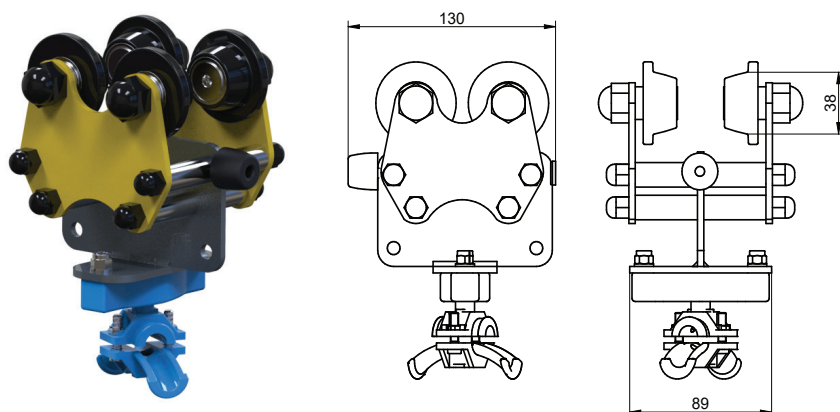
- 10 model "10"
- 130 or 150 complete length of cable trolley (mm)
- 38 diameter of roller 38 mm
- 45 diameter of roller 45 mm

**Catalog № 5001.10.1000**

**Catalog № 5002.10.1500**

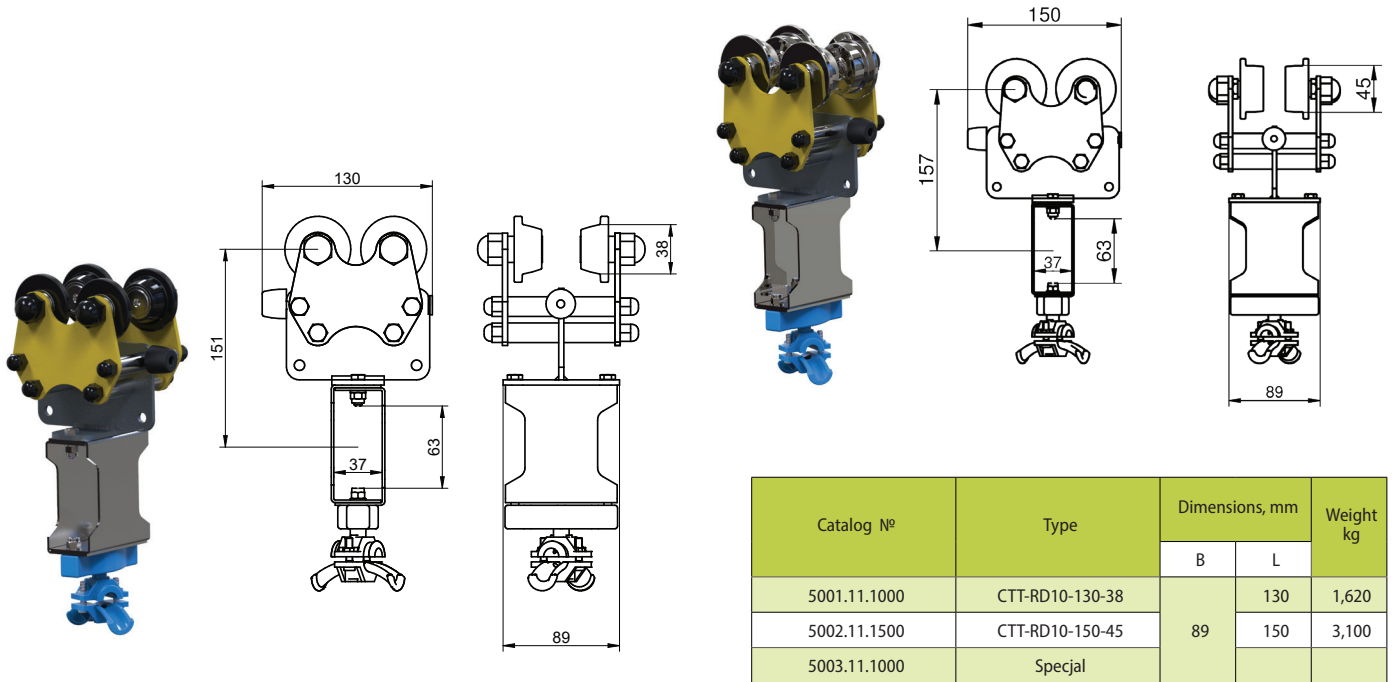
- 01 consecutive catalog №
- 10 Cable trolley – model 10
  - 11 Towing trolley 11
  - 12 Terminal clip
- 10 number diameter of roller 38 mm
- 15 number diameter of roller 45 mm
- 000 without additory rollers

**Cable trolley**



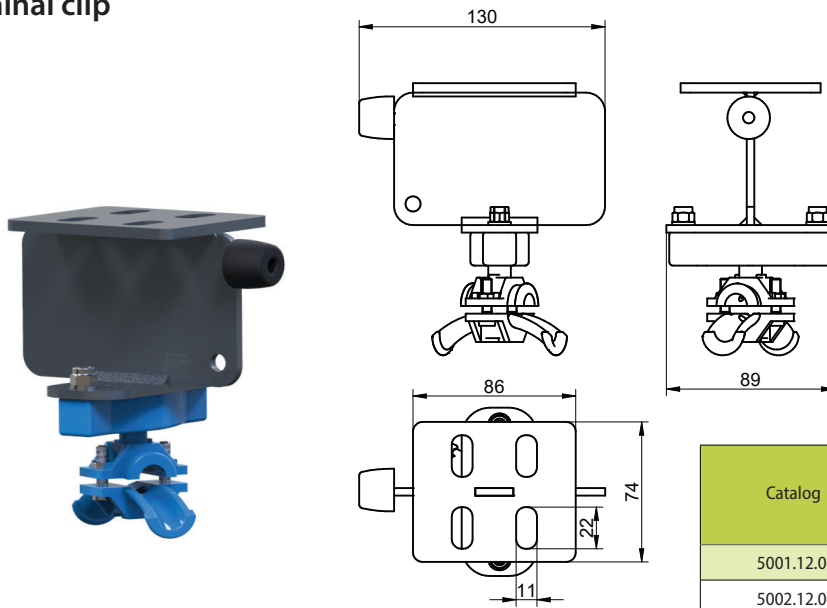
Catalog №	Type	Dimensions mm		Weight kg
		B	L	
5001.10.1000	CT-RD10-130-38	89	130	1,310
5002.10.1500	CT-RD10-150-45		150	2,650
5003.10.1000	Specjal			

## Towing trolley



Catalog №	Type	Dimensions, mm		Weight kg
		B	L	
5001.11.1000	CTT-RD10-130-38	89	130	1,620
5002.11.1500	CTT-RD10-150-45		150	3,100
5003.11.1000	Specjal			

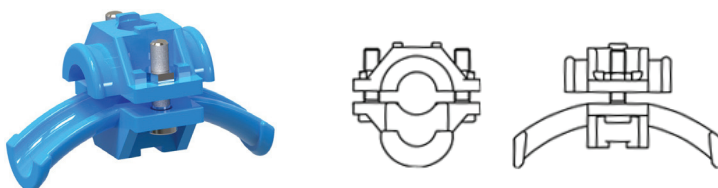
## Terminal clip



Catalog №	Type	Dimensions, mm		Weight kg
		B	L	
5001.12.0000	CTE-RD10-130-00	89	130	1,100
5002.12.0000	Specjal			

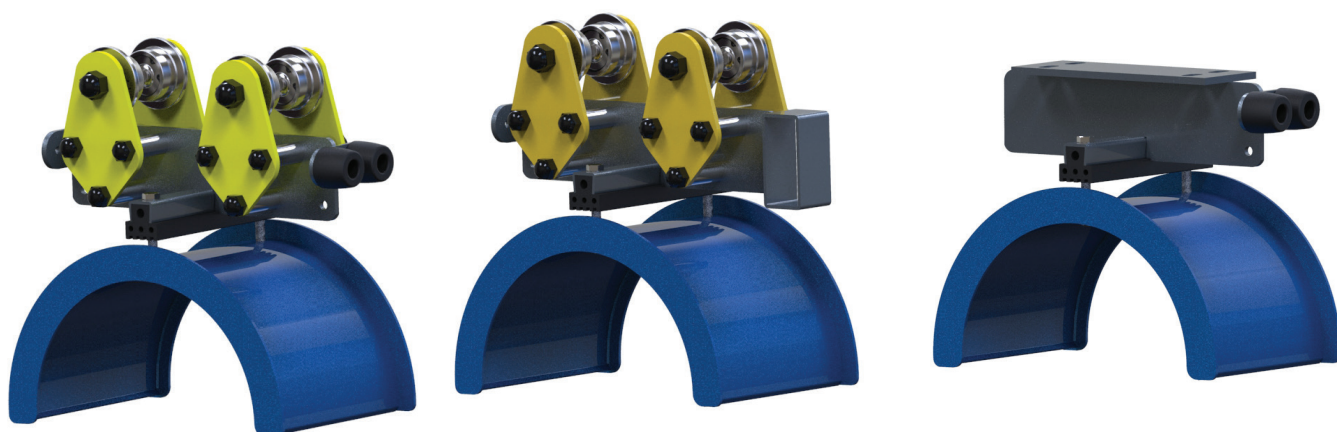
## Hoop of round cables WEK

Material: polyamide



Catalog №	Type	Ø	Weight (kg/szt)
100905	WEK-2	10-16	0.032
100906	WEK-3	17-25	0.058
100907	WEK-4	26-36	0.085

## MODEL RD-20



**Functionality - For the production of cable festoon systems for I-beam types accordant GOST, IPE, INP**

### Material:

Case	Zinc-galvanized steel S355, Powder painting
	Case RAL 7012
	Roller fastening RAL 1021
	Saddle RAL 5010
	Can be produced of stainless or acid-resistant steel
Rollers	High-strength steel, galvanized
Bearing	spherical ball bearing
Roller axis	Zinc-galvanized steel
Bolt joint	Metric system
Bumper	Rubber EPDM
End cap	PCV
Saddle	Zinc-galvanized steel
Seals	Rubber EPDM

### Technical characteristics:

Maximum load	50 kg
Travel speed	100 m/min
Operating temperature	- 30 ° C and above. Possibly from -40 ° C and below
Min. dimension of beam	100

### Please, notice,

RM International Group Sp. O.o. reserves the right to introduce modifications into design of any element.

## CT-RD20-320x175x200-45

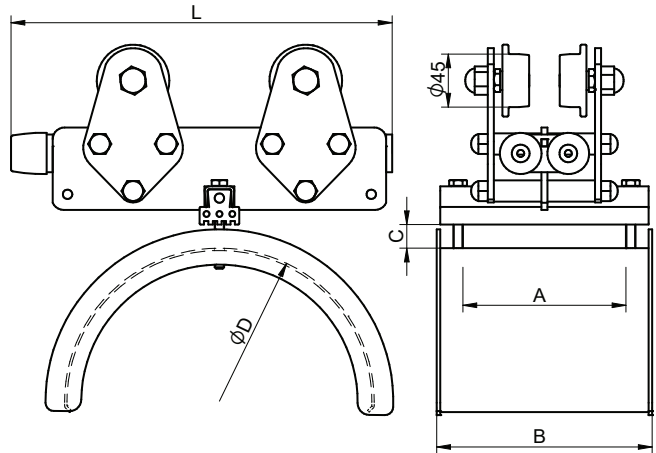
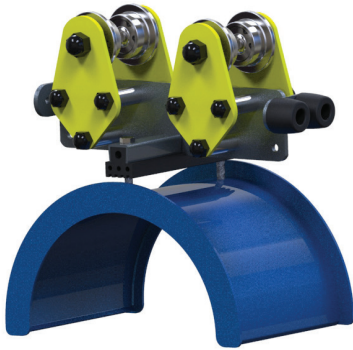
CT-RD Type - Cable trolley for round cable

- 20 model "20"
- 320 complete length of cable trolley (mm)
- 175 width of saddle
- 200 diameter of saddle
- 45 diameter of roller 45 mm

**Catalog № 5004.20.20.2000**

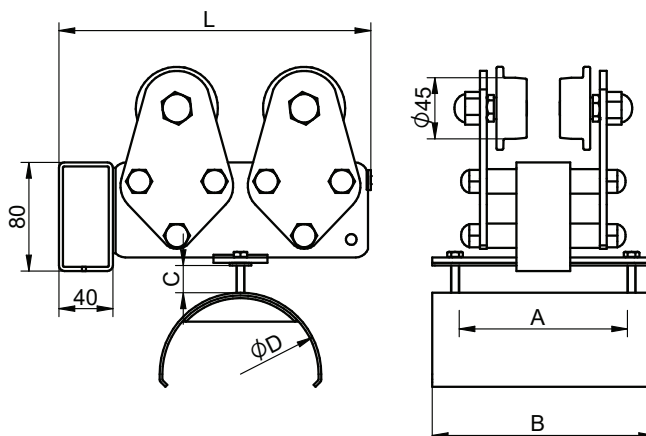
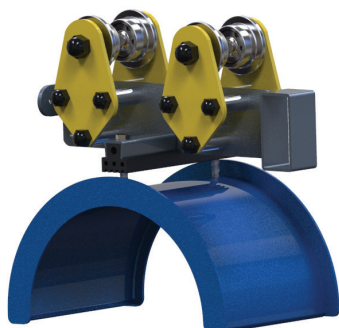
- 50 series number
- 04 consecutive catalog №
- 20 Cable trolley – model 20
  - 21 Towing trolley – model 21
  - 22 Terminal clip
- 20 max height of cables package (mm)
- 2 number diameter of roller 45 mm
- 000 without additory rollers

### Cable trolley



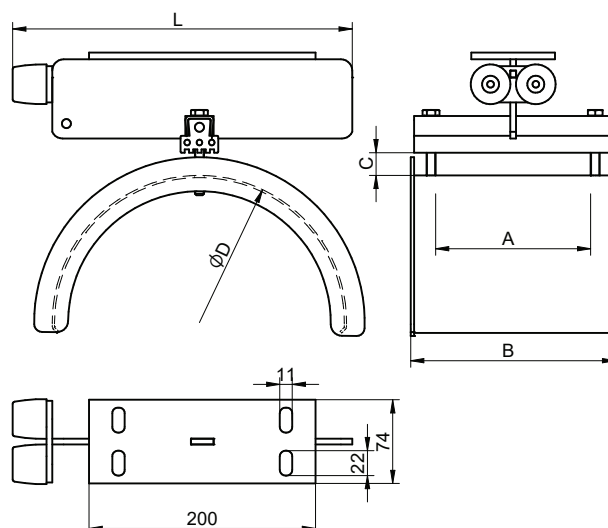
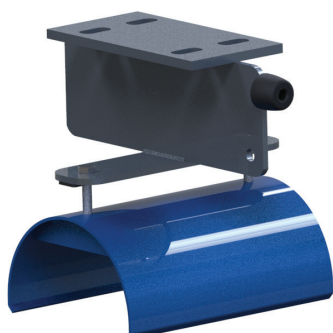
Catalog №	Type	Dimensions mm					Weight kg
		A	B	C-max	D	L	
5004.20.20.2000	CT-RD20-320x175x200-45	130	175	20	200	320	4,950
5005.20.25.2000	CT-RD20-320x175x260-45			25	260		6,400
5006.20.20.2000	CT-RD20-320x205x200-45	160	205	20	200	320	6,350
5007.20.25.2000	CT-RD20-320x205x260-45			25	260		6,700
5008.20.00.2000	Specjal						

## Towing trolley



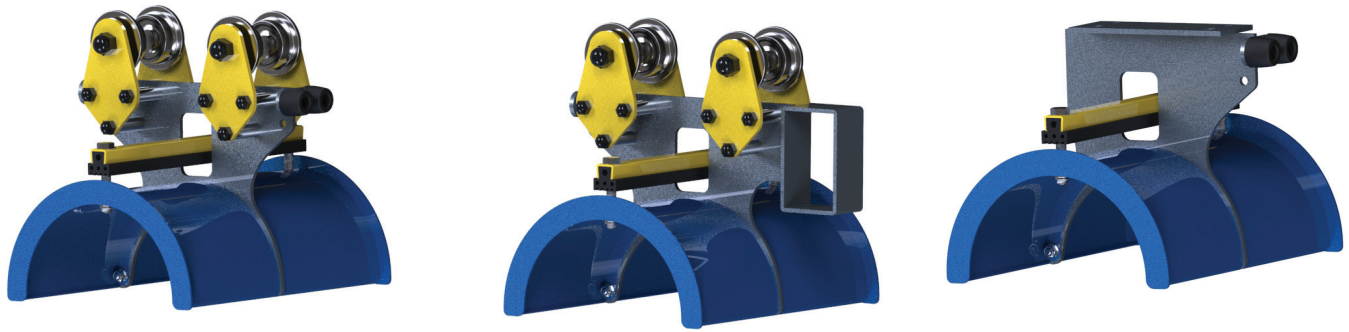
Catalog №	Type	Dimensions mm					Weight kg
		A	B	C-max	D	L	
5004.21.20.2000	CTT-RD20-320x175x200-45	130	175	20	200	320	5,440
5005.21.25.2000	CTT-RD20-320x175x260-45			25	260		7,100
5006.21.20.2000	CTT-RD20-320x205x200-45	160	205	20	200	320	7,050
5007.21.25.2000	CTT-RD20-320x205x260-45			25	260		7,400
5008.21.00.2000	Specjal						

## Terminal clip



Catalog №	Type	Dimensions mm					Weight kg
		A	B	C-max	D	L	
5004.22.20.0000	CTE-RD20-320x175x200-00	130	175	20	200	320	2,590
5005.22.25.0000	CTE-RD20-320x175x260-00			25	260		3,800
5006.22.20.0000	CTE-RD20-320x205x200-00	160	205	20	200	320	2,900
5007.22.25.0000	CTE-RD20-320x205x260-00			25	260		4,050
5008.22.00.0000	Specjal						





**Functionality - For the production of cable festoon systems for I-beam types accordant GOST, IPE, INP**

**Material:**

Case	Zinc-galvanized steel S355, Powder painting
	Case RAL 7012
	Roller fastening RAL 1021
	Saddle RAL 5010
	Can be produced of stainless or acid-resistant steel
Rollers	High-strength steel, galvanized
	Can be produced with additional rollers
Bearing	spherical ball bearing
Roller axis	Zinc-galvanized steel
Bolt joint	Metric system
Bumper	Rubber EPDM
End cap	PVC
Saddle	Zinc-galvanized steel
Seals	Rubber EPDM

**Technical characteristics:**

Maximum load	75 - 150 kg
Travel speed	100 m/min
Operating temperature	- 30 ° C and above. Possibly from -40 ° C and below
Min. dimension of beam	100

**Please, notice,**

RM International Group Sp. O.o. reserves the right to introduce modifications into design of any element.

## CT-RD30-300x195x200-45

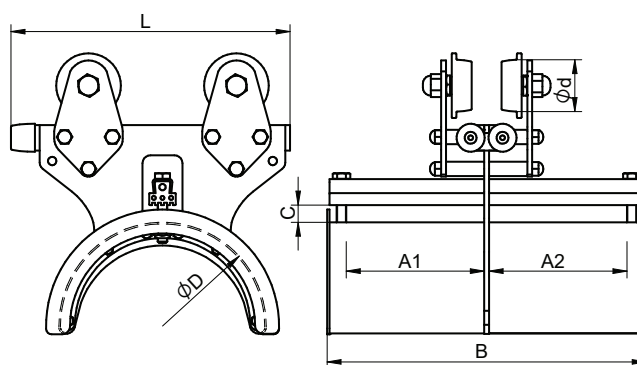
CT-RD Type - Cable trolley for round cable

- 30 model "30"
- 300 complete length of cable trolley (mm)
- 195 width of saddle
- 200 diameter of saddle
- 45 diameter of roller 45 mm

**Catalog № 5009.30.20.2000**

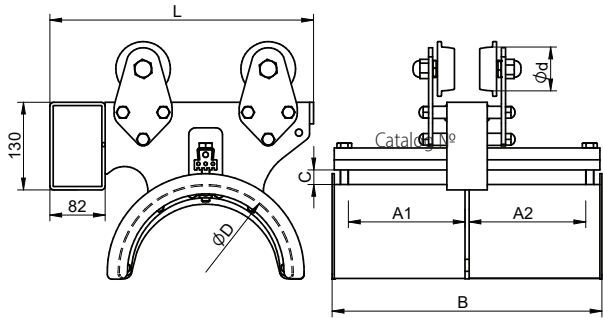
- 50 series number
- 09 consecutive catalog №
- 30 Cable trolley – model 30
  - 31 Towing trolley – model 31
  - 32 Terminal clip
- 20 max height of cables package (mm)
- 2 number diameter of roller 45 mm
- 000 without additory rollers

### Cable trolley



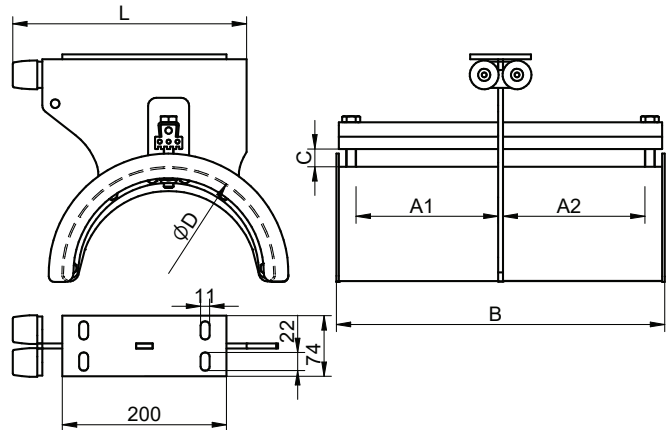
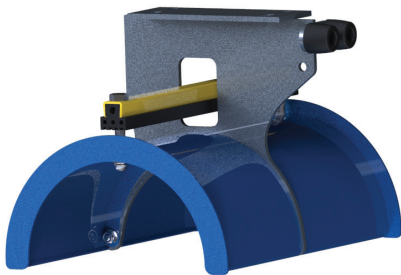
Catalog №	Typ	Dimensions, mm						Weight kg
		A1 + A2	B	C-max	D	L	Rø	
5009.30.20.2000	CT-RD30-300x195x200-45	150	195	20	200	300	45	5,150
5010.30.25.2000	CT-RD30-350x195x260-45			25	260	350		6,700
5011.30.20.2000	CT-RD30-300x255x200-45	210	255	20	200	300		5,480
5012.30.25.2000	CT-RD30-350x255x260-45			25	260	350		7,230
5013.30.00.0000	Specjal							

## Towing trolley



Catalog N°	Type	Dimensions, mm						Weight kg
		A1/A2	B	C-max	D	L	RØ	
5009.31.20.2000	CTT-RD30-300x195x200-45	150	195	20	200	300	45	5,650
5010.31.25.2000	CTT-RD30-350x195x260-45			25	260	350		7,410
5011.31.20.2000	CTT-RD30-300x255x200-45	210	255	20	200	300		5,940
5012.31.25.2000	CTT-RD30-350x255x260-45			25	260	350		7,940
5013.31.00.0000	Specjal							

## Terminal clip



Catalog N°	Type	Dimensions, mm					Weight kg
		A1/A2	B	C-max	D	L	
5009.32.20.0000	CTE-RD30-300x195x200-00	150	195	20	200	300	2,800
5010.32.25.0000	CTE-RD30-350x195x260-00			25	260	350	4,210
5011.32.20.0000	CTE-RD30-300x255x200-00	210	255	20	200	300	3,100
5012.32.25.0000	CTE-RD30-350x255x260-00			25	260	350	4,740
5013.32.00.0000	Specjal						

## MODEL RD-40



**Functionality - For the production of cable f Weston systems for I-beam types accordant GOST, IPE, INP**

### Material:

Case	Zinc-galvanized steel S355, Powder painting
Case	RAL 7012
Roller fastening	RAL 1021
Saddle	RAL 5010
Rollers	Can be produced of stainless or acid-resistant steel High-strength steel, galvanized Can be produced with additional rollers
Bearing	spherical ball bearing
Roller axis	Zinc-galvanized steel
Bolt joint	Metric system
Bumper	Rubber EPDM
End cap	PCV
Saddle	Zinc-galvanized steel
Seals	Rubber EPDM

### Technical characteristics:

Maximum load	150 kg
Travel speed	120 m/min
Operating temperature	-30 °C and above. Possibly from -40 °C and below
Min. dimension of beam	120

### Please, notice,

RM International Group Sp. O.o. reserves the right to introduce modifications into design of any element.

## CT-RD40-300x195x200-65

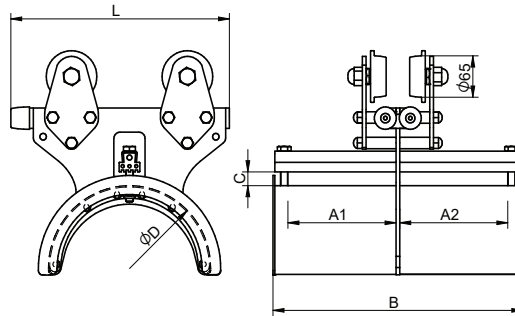
CT-RD Type - Cable trolley for round cable

40 model "40"  
 300 complete length of cable trolley (mm)  
 195 width of saddle  
 200 diameter of saddle  
 65 diameter of roller 65 mm

### Catalog N° 5014.40.20.3000

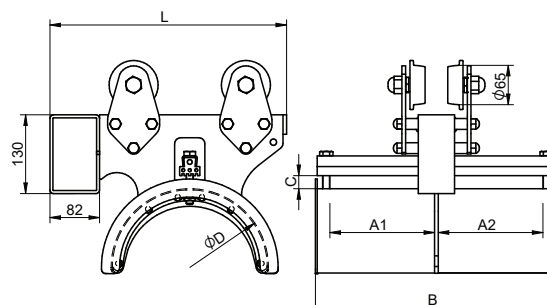
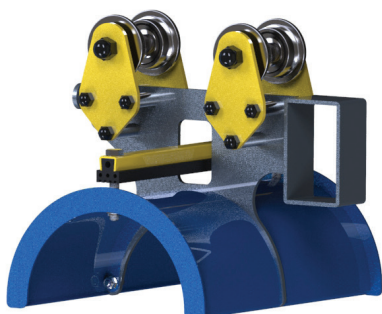
50 series number  
 14 consecutive catalog N°  
 40 Cable trolley – model 40  
   41 Towing trolley – model 41  
   42 Terminal clip  
 20 max height of cables package (mm)  
 3 number diameter of roller 65 mm  
 000 without additory rollers

### Cable trolley



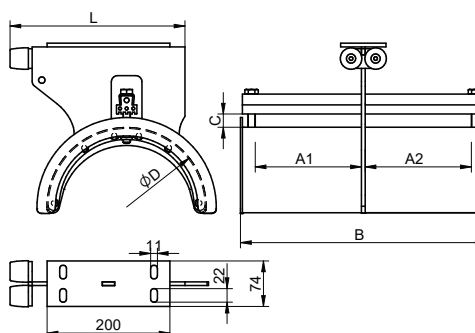
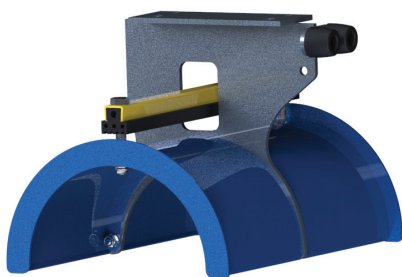
Catalog N°	Type	Dimensions, mm						Weight kg
		A1 + A2	B	C-max	D	L	Rø	
5014.40.20.3000	CT-RD40-300x195x200-65	150	195	20	200	300	65	9,460
5015.40.25.3000	CT-RD40-350x195x260-65			25	260	350		10,990
5016.40.20.3000	CT-RD40-300x255x200-65	210	255	20	200	300		9,780
5017.40.25.3000	CT-RD40-350x255x260-65			25	260	350		11,500
5018.40.00.3000	Specjal							

## Towing trolley

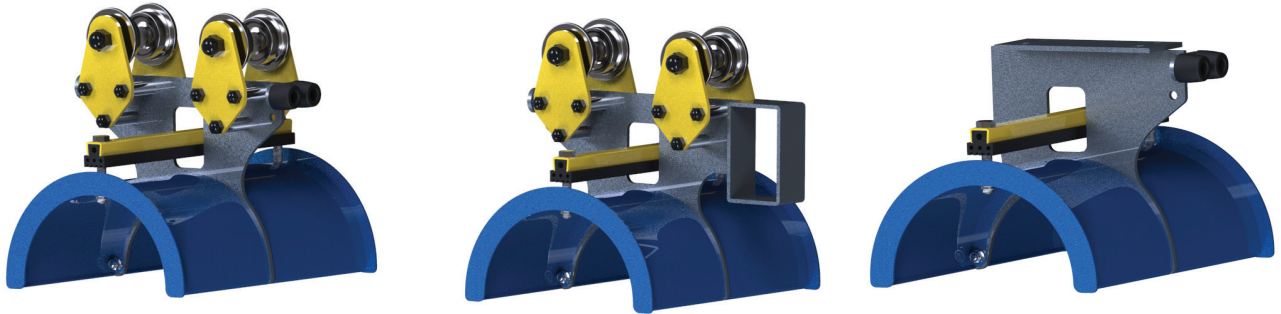


Catalog №	Type	Dimensions, mm						Weight kg
		A1/A2	B	C-max	D	L	Rø	
5014.41.20.3000	CTT-RD40-300x195x200-65	150	195	20	200	300	65	9,980
5015.41.25.3000	CTT-RD40-350x195x260-65			25	260	350		11,480
5016.41.20.3000	CTT-RD40-300x255x200-65	210	255	20	200	300		10,290
5017.41.25.3000	CTT-RD40-350x255x260-65			25	260	350		12,020
5018.41.00.3000	Specjal							

## Zacisk końcowy



Catalog №	Type	Dimensions, mm					Weight kg
		A1 / A2	B	C-max	D	L	
5014.42.20.0000	CTE-RD40-300x195x200-00	150	195	20	200	300	2,800
5015.42.25.0000	CTE-RD40-350x195x260-00			25	260	350	4,210
5016.42.20.0000	CTE-RD40-300x255x200-00	210	255	20	200	300	3,100
5017.42.25.0000	CTE-RD40-350x255x260-00			25	260	350	4,740
5018.42.00.0000	Specjal						



**Functionality - For the production of cable festoon systems for I-beam types accordant GOST, IPE, INP**

**Material:**

Case	Zinc-galvanized steel S355, Powder painting
	Case RAL 7012
	Roller fastening RAL 1021
	Saddle RAL 5010
	Can be produced of stainless or acid-resistant steel
Rollers	High-strength steel, galvanized
	Can be produced with additional rollers
Bearing	spherical ball bearing
Roller axis	Zinc-galvanized steel
Bolt joint	Metric system
Bumper	Rubber EPDM
End cap	PCV
Saddle	Zinc-galvanized steel
Seals Rubber	EPDM

**Technical characteristics:**

Maximum load	150 kg
Travel speed	100 m/min
Operating temperature	- 30 ° C and above. Possibly from -40 ° C and below
Min. dimension of beam	120

**Please, notice,**

RM International Group Sp. O.o. reserves the right to introduce modifications into design of any element.

## CT-RD50-350x295x260-65

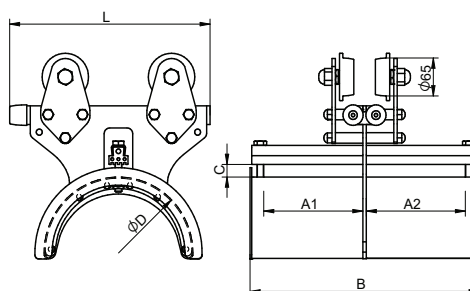
CT-RD Type - Cable trolley for round cable

- 50 model "50"
- 350 complete length of cable trolley (mm)
- 295 width of saddle
- 260 diameter of saddle
- 65 diameter of roller 65 mm

**Catalog N° 5019.50.25.3000**

- 50 series number
- 19 consecutive catalog N°
- 50 Cable trolley – model 50
  - 51 Towing trolley – model 51
  - 52 Terminal clip
- 25 max height of cables package (mm)
- 3 number diameter of roller 65 mm
- 000 without additory rollers

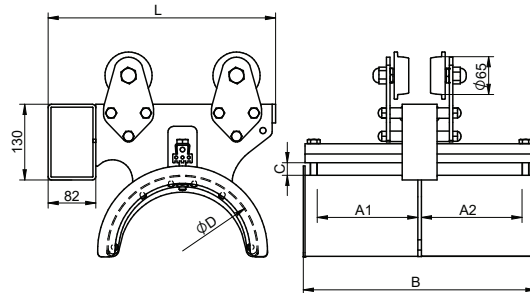
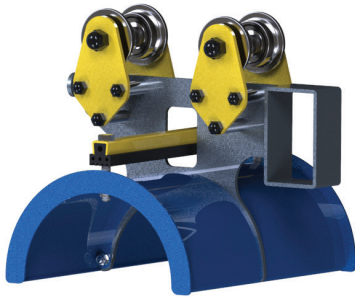
### Cable trolley



Catalog N°	Type	Dimensions, mm						Weight kg
		A1/A2	B	C-max	D	L	Rø	
5019.50.25.3000	CT-RD50-350x295x260-65	250	295	25	260	350	65	11,600
5020.50.25.3000	CT-RD50-350x345x260-65	300	345	25	260	350		11,940
5021.50.25.3000	CT-RD50-350x395x260-65	350	395	25	260	350		12,950
5022.50.25.3000	CT-RD50-350x450x260-65	400	450	25	260	350		13,400
5023.50.00.3000	Specjal							

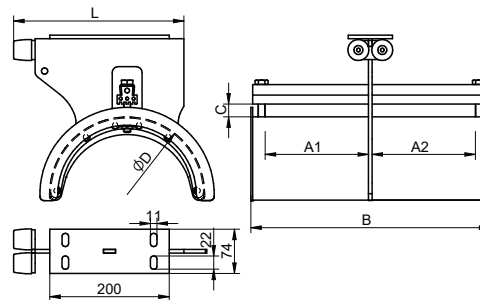
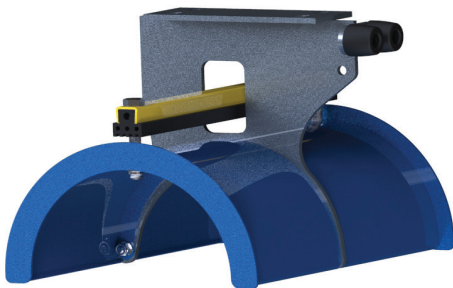


## Towing trolley



Catalog N°	Type	Dimensions, mm						Weight kg
		A1/A2	B	C-max	D	L	Rø	
5019.51.25.3000	CTT-RD50-350x295x260-65	250	295	25	260	350	65	12,200
5020.51.25.3000	CTT-RD50-350x345x260-65	300	345	25	260	350		12,540
5021.51.25.3000	CTT-RD50-350x395x260-65	350	395	25	260	350		13,550
5022.51.25.3000	CTT-RD50-350x450x260-65	400	450	25	260	350		14,000
5023.51.00.3000	Specjal							

## Terminal clip



Catalog N°	Type	Dimensions, mm					Weight kg
		A1 / A2	B	C-max	D	L	
5019.52.25.0000	CTE-RD50-350x295x260-00	250	295	25	260	350	5,950
5020.52.25.0000	CTE-RD50-350x345x260-00	300	345	25	260	350	7,110
5021.52.25.0000	CTE-RD50-350x395x260-00	350	395	25	260	350	7,250
5022.52.25.0000	CTE-RD50-350x450x260-00	400	450	25	260	350	7,870
5023.52.00.0000	Specjal						

## MODEL RD-60



**Functionality - For the production of cable festoon systems for I-beam types accordant GOST, IPE, INP**

### Material:

Case	Zinc-galvanized steel S355, Powder painting
Case	RAL 7012
Roller fastening	RAL 1021
Saddle	RAL 5010
	Can be produced of stainless or acid-resistant steel
Rollers	Special polyamide
	Can be produced with additional rollers
Bearing	spherical ball bearing
Roller axis	Zinc-galvanized steel
Bolt joint	Metric system
Bumper Rubber	EPDM
End cap	PCV
Saddle	Zinc-galvanized steel
Seals Rubber E	PDM

### Technical characteristics:

Maximum load	180 kg
Travel speed	120 m/min
Operating temperature	- 30 ° C and above. Possibly from -40 ° C and below
Min. dimension of beam	120

### Please, notice,

RM International Group Sp. O.o. reserves the right to introduce modifications into design of any element.

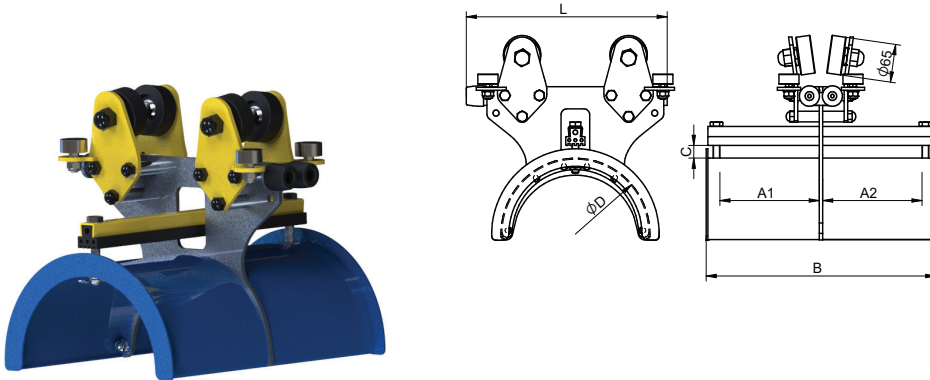
## CT-RD60-350x360x260-65

CT-RD Type - Cable trolley for round cable  
 60 model "60"  
 350 complete length of cable trolley (mm)  
 360 width of saddle  
 260 diameter of saddle  
 65 diameter of roller 65 mm

**Catalog N° 5024.60.25.3000**

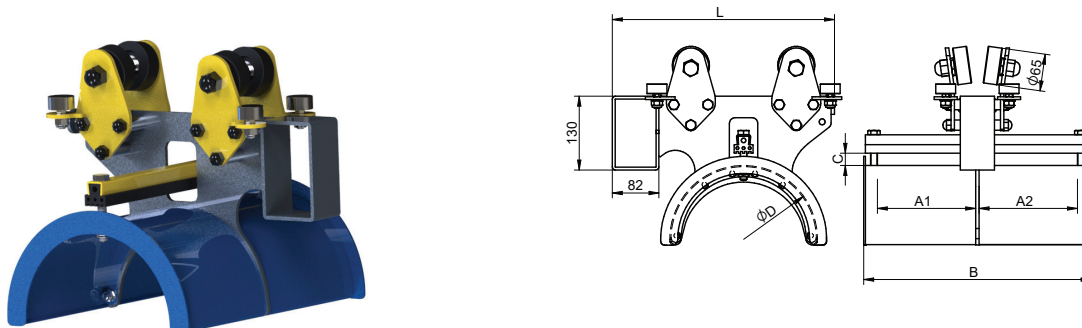
50 series number  
 24 consecutive catalog N°  
 60 Cable trolley – model 60  
   61 Towing trolley – model 61  
   62 Terminal clip  
 25 max height of cables package (mm)  
 3 number diameter of roller 65 mm  
 000 without additory rollers

### Cable trolley



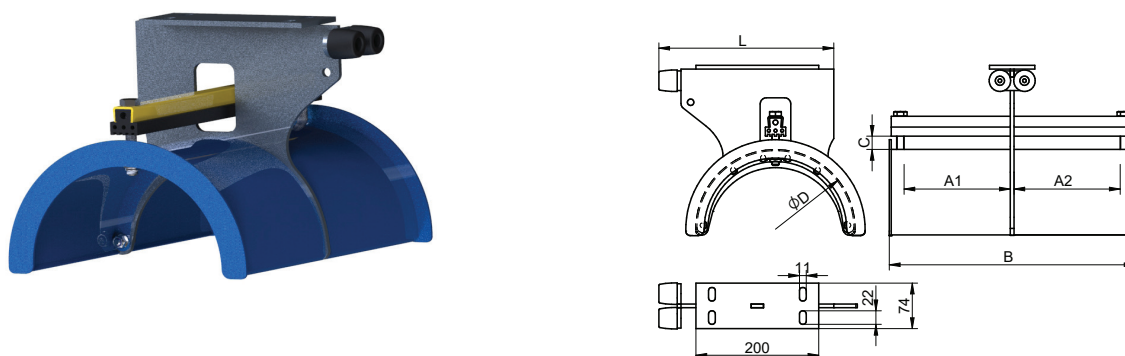
Catalog N°	Type	Dimensions, mm						Weight kg
		A1/A2	B	C-max	D	L	Rø	
5024.60.25.3000	CT-RD60-350x360x260-65-PU	310	360	25	260	350	65	12,050
5025.60.25.3000	CT-RD60-350x400x260-65-PU	350	400	25	260	350		13,010
5026.60.25.3000	CT-RD60-350x440x260-65-PU	390	440	25	260	350		13,300
5027.60.25.3000	CT-RD60-350x500x260-65-PU	450	500	25	260	350		13,950
5028.60.25.3000	Specjal							

## Towing trolley



Catalog N°	Type	Dimensions, mm						Weight kg
		A1/A2	B	C-max	D	L	Rø	
5024.61.25.3000	CTT-RD60-350x360x260-65-PU	310	360	25	260	350	65	12,650
5025.61.25.3000	CTT-RD60-350x400x260-65-PU	350	400	25	260	350		13,610
5026.61.25.3000	CTT-RD60-350x440x260-65-PU	390	440	25	260	350		13,900
5027.61.25.3000	CTT-RD60-350x500x260-65-PU	450	500	25	260	350		14,550
5028.61.25.3000	Specjal							

## Terminal clip



Catalog N°	Type	Dimensions, mm					Weight kg
		A1 / A2	B	C-max	D	L	
5024.62.25.0000	CTE-RD60-350x360x260-00	310	360	25	260	350	7,190
5025.62.25.0000	CTE-RD60-350x400x260-00	350	400	25	260	350	7,300
5026.62.25.0000	CTE-RD60-350x440x260-00	390	440	25	260	350	7,670
5027.62.25.0000	CTE-RD60-350x500x260-00	450	500	25	260	350	8,150
5028.62.25.0000	Specjal						

## MODEL RD-70



**Functionality - For the production of cable festoon systems for I-beam types accordant GOST, IPE, INP**

### Material:

Case	Zinc-galvanized steel S355, Powder painting
Case	RAL 7012
Roller fastening	RAL 1021
Saddle	RAL 5010
	Can be produced of stainless or acid-resistant steel
Rollers	High-strength steel, galvanized
	Can be produced with additional rollers
Bearing	spherical ball bearing
Roller axis	Zinc-galvanized steel
Bolt joint	Metric system
Bumper Rubber	EPDM
End cap	PCV
Saddle	Zinc-galvanized steel
Seals Rubber	EPDM

### Technical characteristics:

Maximum load	180 kg
Travel speed	100 m/min
Operating temperature	- 30 ° C and above. Possibly from -40 ° C and below
Min. dimension of beam	140

### Please, notice,

RM International Group Sp. O.o. reserves the right to introduce modifications into design of any element.

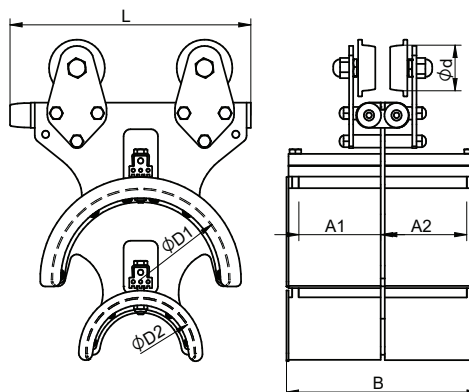
## CT-RD70-350x360x260/160-65

CT-RD Cable trolley for round cable  
 70 model "70"  
 350 complete length of cable trolley (mm)  
 360 width of saddle  
 260/160 diameters of saddles  
 65 diameter of roller 65 mm

**Catalog N° 5029.70.25.3000**

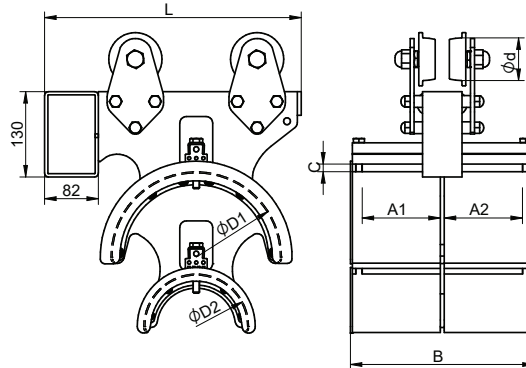
50 series number  
 29 consecutive catalog N°  
 70 Cable trolley – model 70  
   71 Towing trolley – model 71  
   72 Terminal clip  
 25 max height of cables package (mm)  
 3 number diameter of roller 65 mm  
 4 number diameter of roller 85 mm  
 000 without additory rollers

### Cable trolley



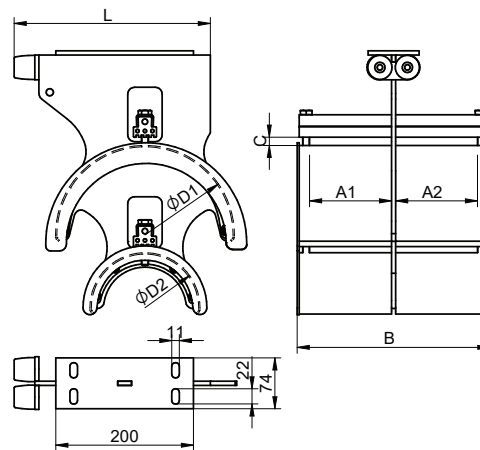
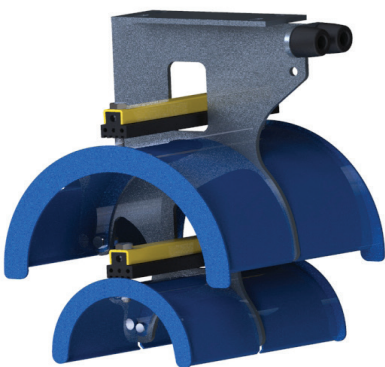
Catalog N°	Type	Dimensions, mm						Weight kg
		A1/A2	B	D1	D2	L	Rø	
5029.70.25.3000	CT-RD70-350x360x260/160-65	310	360	260	160	350	65	16,300
5030.70.25.3000	CT-RD70-350x400x260/160-65	350	400	260	160	350		17,210
5031.70.25.4000	CT-RD70-350x440x260/160-85	390	440	260	160	350	85	18,100
5032.70.25.4000	CT-RD70-350x500x260/160-85	450	500	260	160	350		19,050
5033.70.00.0000	Specjal							

## Towing trolley



Catalog №	Type	Dimensions, mm						Weight kg
		A1/A2	B	D1	D2	L	Rø	
5029.71.25.3000	CTT-RD70-350x360x260/160-65	310	360	260	160	350	65	17,400
5030.71.25.3000	CTT-RD70-350x400x260/160-65	350	400	260	160	350		18,620
5031.71.25.4000	CTT-RD70-350x440x260/160-85	390	440	260	160	350	85	19,800
5032.71.25.4000	CTT-RD70-350x500x260/160-85	450	500	260	160	350		21,220
5033.71.00.0000	Specjal							

## Terminal clip



Catalog №	Type	Dimensions, mm					Weight kg
		A1 / A2	B	D1	D2	L	
5029.72.25.0000	CTE-RD70-350x360x260/160-00	310	360	260	160	350	11,600
5030.72.25.0000	CTE-RD70-350x400x260/160-00	350	400	260	160	350	12,200
5031.72.25.0000	CTE-RD70-350x440x260/160-00	390	440	260	160	350	13,100
5032.72.25.0000	CTE-RD70-350x500x260/160-00	450	500	260	160	350	14,050
5300.72.00.0000	specjal						



**Functionality - For the production of cable festoon systems for I-beam types accordant GOST, IPE, INP**

**Material:**

Case	Zinc-galvanized steel S355, Powder painting
	Case RAL 7012
	Roller fastening RAL 1021
	Saddle RAL 5010
	Can be produced of stainless or acid-resistant steel
Rollers	Special polyamide
	Can be produced with additional rollers
Bearing	spherical ball bearing
Roller axis	Zinc-galvanized steel
Bolt joint	Metric system
Bumper	Rubber EPDM
End cap	PCV
Saddle	Zinc-galvanized steel
Seals Rubber	EPDM

**Technical characteristics:**

Maximum load	180 kg
Travel speed	120 m/min
Operating temperature	- 30 ° C and above. Possibly from -40 ° C and below
Min. dimension of beam	140

**Please, notice,**

RM International Group Sp. O.o. reserves the right to introduce modifications into design of any element.



## CT-RD80-350x360x260/160-65

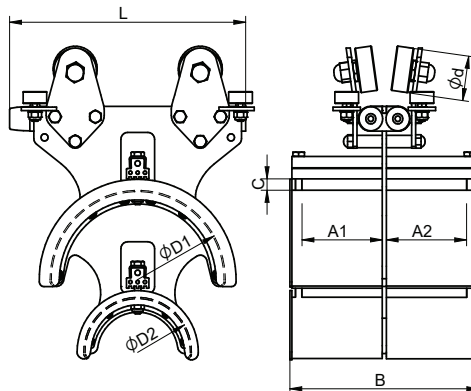
CT-RD Type - Cable trolley for round cable

80 model "80"  
 350 complete length of cable trolley (mm)  
 360 width of saddle  
 260/160 diameters of saddles  
 65 diameter of roller 65 mm

**Catalog N° 5034.80.25.3000**

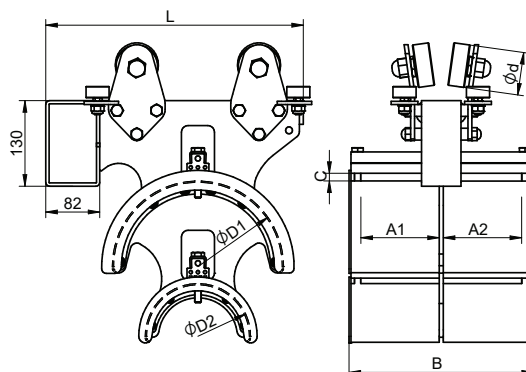
50 series number  
 34 consecutive catalog N°  
 80 Cable trolley – model 80  
   81 Towing trolley – model 81  
   82 Terminal clip  
 2 max height of cables package (mm)  
 3 number diameter of roller 65 mm  
 4 number diameter of roller 85 mm  
 000 without additory rollers

### Cable trolley



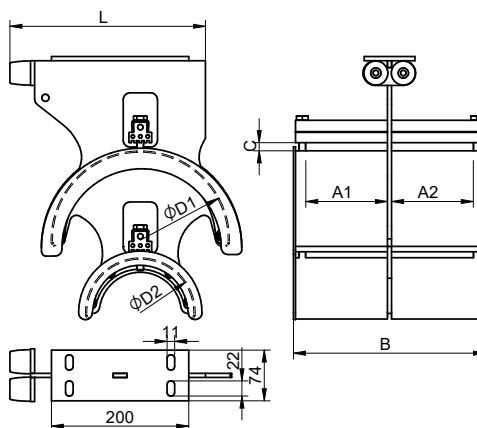
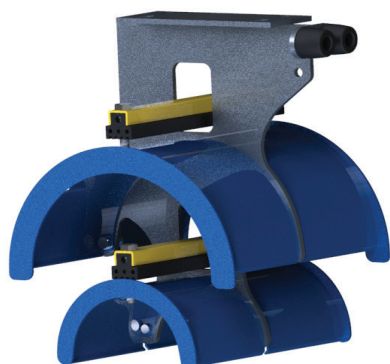
Catalog N°	Type	Dimensions, mm						Weight kg
		A1 / A2	B	D1	D2	L	Rø	
5034.80.25.3000	CT-RD80-350x360x260/160-65-PU	310	360	260	160	350	65	16,450
5035.80.25.3000	CT-RD80-350x400x260/160-65-PU	350	400	260	160	350		17,450
5036.80.25.4000	CT-RD80-350x440x260/160-85-PU	390	440	260	160	350	85	21,550
5037.80.25.4000	CT-RD80-350x500x260/160-85-PU	450	500	260	160	350		22,760
5038.80.00.0000	Specjal							

## Towing trolley



Catalog №	Type	Dimensions, mm						Weight kg
		A1 / A2	B	D1	D2	L	Rø	
5034.81.25.3000	CTT-RD80-350x360x260/160-65-PU	310	360	260	160	350	65	17,550
5035.81.25.3000	CTT-RD80-350x400x260/160-65-PU	350	400	260	160	350		18,550
5036.81.25.4000	CTT-RD80-350x440x260/160-85-PU	390	440	260	160	350	85	22,650
5037.81.25.4000	CTT-RD80-350x500x260/160-85-PU	450	500	260	160	350		23,860
5038.81.00.0000	Specjal							

## Terminal clip



Catalog №	Type	Dimensions, mm					Weight kg
		A1 / A2	B	D1	D2	L	
5034.82.25.0000	CTE-RD80-350x360x260/160-00	310	360	260	160	350	11,600
5035.82.25.0000	CTE-RD80-350x400x260/160-00	350	400	260	160	350	12,200
5036.82.25.0000	CTE-RD80-350x440x260/160-00	390	440	260	160	350	13,100
5037.82.25.0000	CTE-RD80-350x500x260/160-00	450	500	260	160	350	14,050
5038.82.00.0000	Specjalny						