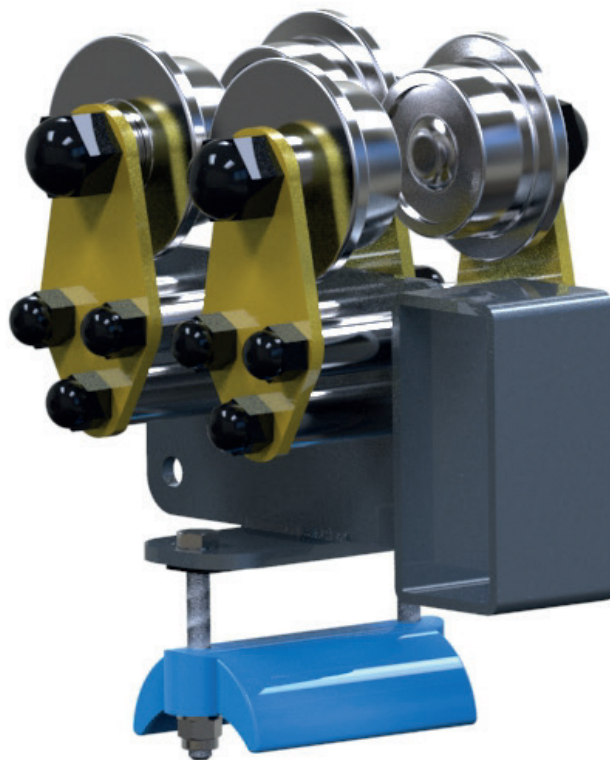
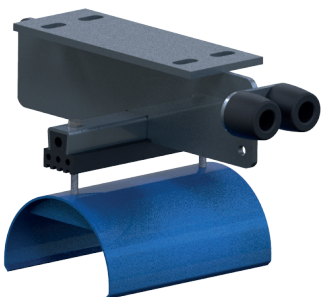
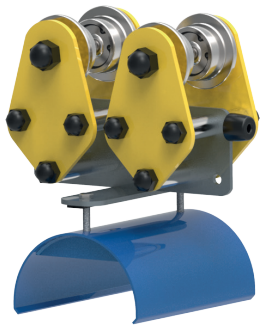




RM INTERNATIONAL GROUP Sp. z o.o.

Cable trolleys and components series FL



Dear partners!

Here are our new catalogs of our products.

They are the result of our cooperation with partners in Poland, countries of Eastern and Western Europe and the countries of the Customs Union: Russia, Kazakhstan, Belarus.

We always listen out to you needs and desires and respond to you wishes.

We have also offered some innovative solutions for the ease of installation and reduction of equipment costs.

We always offer our guarantee on delivery of all power and data transmission systems for cranes and for all other types of mobile equipment and machinery:

Cable trolleys

Light series load up to 10 kg for the trolley

Medium series load up to 65 kg for the trolley

Heavy series load up to 150 kg for the trolley

Heavyweight series load on the trolley above 150 kg

With electrodrive for long runs

The conductor bars from 35A to 5000A

Multiterminal conductor bars

System of contact monorail

Drag chain systems complete with trays and cables as a unit

Plastic

Metal

Cable reels

Additionally supply:

Rail fastening system: Claws and crane rail pad RAY PAD

Comfortable crane cabs

We recommend high quality cables in accordance with your technical specifications for all our systems.

We specialize in manufacturing and supplying of ready-made cable festoon systems, drag chain systems complete with trays and cables as a unit.

We come up with offers of optimal alternative solutions and supplies of equipment in shortest time.

We are always aimed at our partner's supplies and services, and constantly work on improvement of our product quality and service's.

We regard all special tasks as a real challenge for our development

You are always welcome 24 hours 7 days a week.

MODEL FL-10



Functionality - For the production of cable festoon systems for I-beam types accordant GOST, IPE, INP

Material:

Case	Zinc-galvanized steel S355, Powder painting
Case	RAL 7012
Roller fastening	RAL 1021
Saddle	RAL 5010
	Can be produced of stainless or acid-resistant steel
Rollers	Polyamide
Bearing	spherical ball bearing
Roller	axis Zinc-galvanized steel
Bolt	joint Metric system
Seals	Rubber EPDM
End	cap PCV
Saddle	Polyamide, Zinc-galvanized steel

Technical characteristics:

Maximum load	20 kg
Travel speed	50 m/min
Operating temperature	- 30 ° C and above. Possibly from -40 ° C and below
Min. dimension of beam	- 80

Please, notice,

RM International Group Sp. o.o. reserves the right to introduce modifications into design of any element.

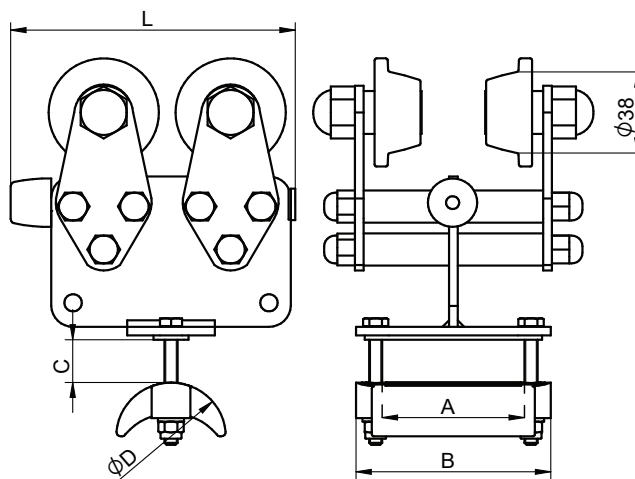
CT-FL10-130x89x50-38

CT-FL Type - Cable trolley for flat cable
 10 model "10"
 130 complete length of cable trolley
 89 width of saddle
 50 diameter of saddle
 38 diameter of roller 38 mm

Catalog N° 4001.10.25.1000

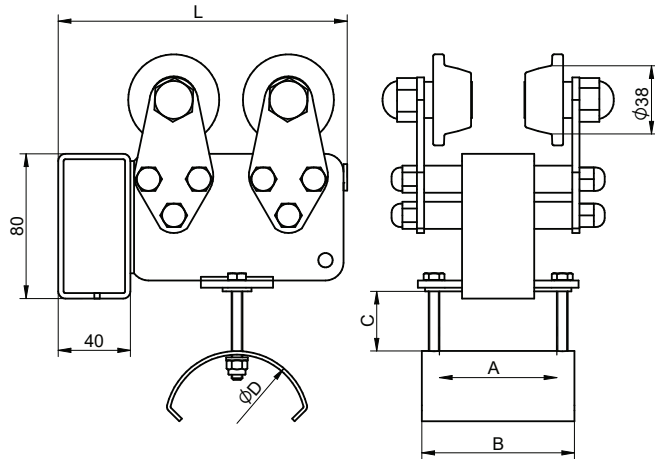
40 Series N°
 01 consecutive catalog N°
 10 Cable trolley – model 10
 11 Towing trolley 11
 12 Terminal clip
 25 max height of cables package (mm)
 1 number diameter of roller 38 mm
 000 without additory rollers

Cable trolley



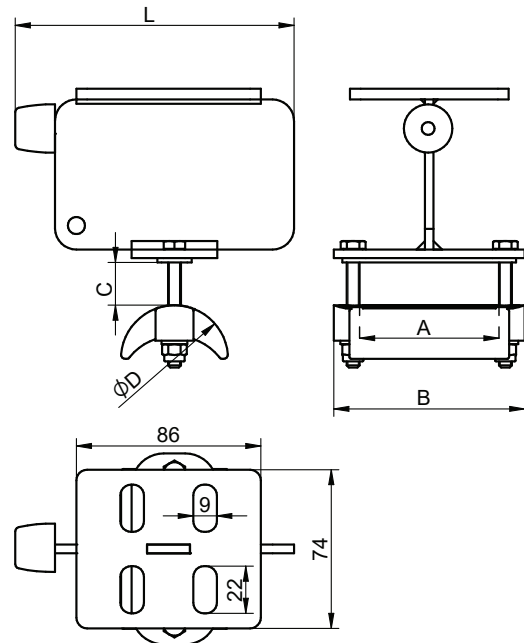
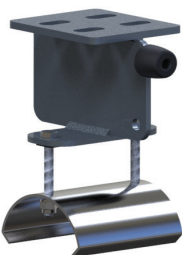
Catalog N°	Type	Dimensions					Weight
		A	B	C-max	D	L	
4001.10.25.1000	CT-FL10-130x89x50P-38	65	89	25	50	130	1,190
4002.10.25.1000	CT-FL10-130x85x50-38			25	50	130	1,280
4003.10.25.1000	CT-FL10-130x85x80-38			25	80	130	1,620
4004.10.35.1000	CT-FL10-170x85x100-38			35	100	170	1,930
4005.10.25.1000	CT-FL10-170x85x120-38			25	120	170	2,330
4006.10.00.1000	specjal						

Towing trolley

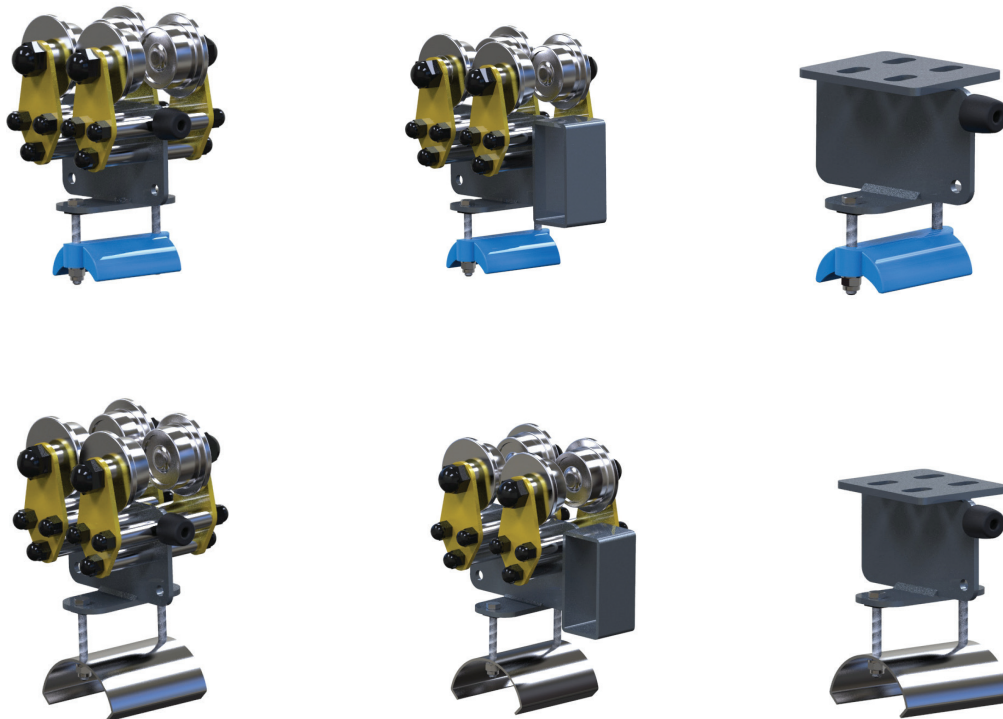


Catalog №	Type	Dimensions					Weight
		A	B	C-max	D	L	
4001.11.25.1000	CTT-FL10-130x89x50P-38	65	89	25	50	130	1,350
4002.11.25.1000	CTT-FL10-130x85x50-38		85	25	50	130	1,440
4003.11.25.1000	CTT-FL10-130x85x80-38			25	80	130	1,750
4004.11.35.1000	CTT-FL10-170x85x100-38			35	100	170	2,200
4005.11.25.1000	CTT-FL10-170x85x120-38			25	120	170	2,600
4006.11.00.1000	specjal						

Terminal clip



Catalog №	Type	Dimensions					Weight
		A	B	C-max	D	L	
4001.12.25.0000	CTE-FL10-130x89x50P-00	65	89	25	50	130	0,460
4002.12.25.0000	CTE-FL10-130x85x50-00		85	25	50	130	0,560
4003.12.25.0000	CTE-FL10-130x85x80-00			25	80	130	0,760
4004.12.35.0000	CTE-FL10-170x85x100-00			35	100	170	1,120
4005.12.25.0000	CTE-FL10-170x85x120-00			25	120	170	1,520
4006.12.00.0000	specjal						



Functionality - For the production of cable festoon systems for I-beam types accordant GOST, IPE, INP

Material:

Case	Zinc-galvanized steel S355, Powder painting
Case	RAL 7012
Roller fastening	RAL 1021
Saddle	RAL 5010
	Can be produced of stainless or acid-resistant steel
Rollers	High-strength steel, galvanized
Bearing	spherical ball bearing
Rollers	High-strength steel
Bolt	joint Metric system
Seals	Rubber EPDM
End	cap PCV
Saddle	Polyamide, Zinc-galvanized steel

Technical characteristics:

Maximum load	20 kg
Travel speed	50 m/min
Operating temperature	- 30 ° C and above. Possibly from -40 ° C and below
Min. dimension of beam	- 80

Please, notice,

RM International Group Sp. o.o. reserves the right to introduce modifications into design of any element.

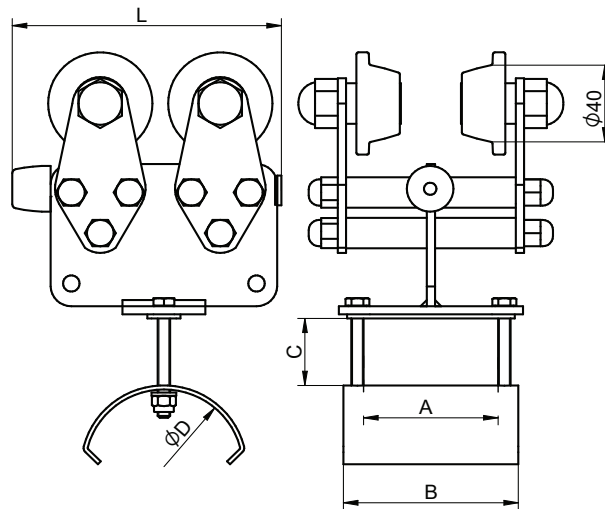
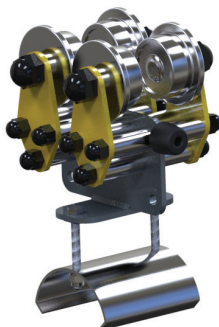
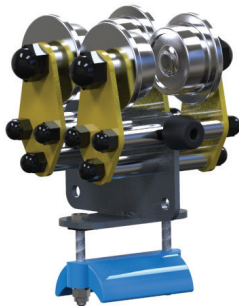
CT-FL20-130x89x50-40

CT-FL Type - Cable trolley for flat cable
 20 model "20"
 130 complete length of cable trolley
 89 width of saddle
 50 diameter of saddle
 40 diameter of roller 40 mm

Catalog № 4007.20.25.1000

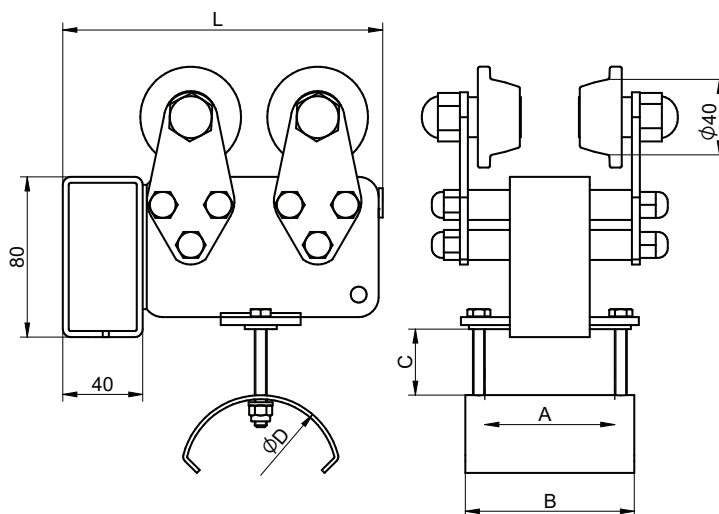
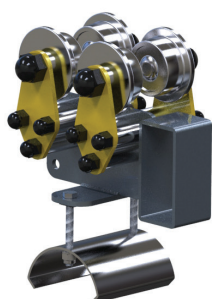
40 Series №
 07 consecutive catalog №
 20 Cable trolley – model 20
 21 Towing trolley 21
 22 Terminal clip
 25 max height of cables package (mm)
 1 number diameter of roller 40 mm
 000 without additory rollers

Cable trolley



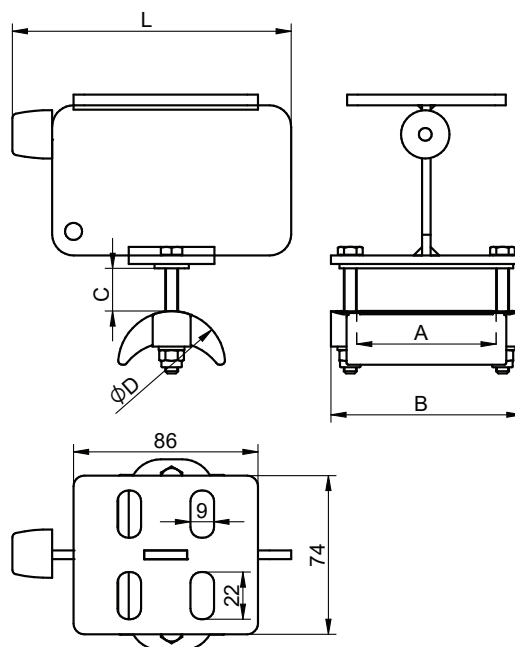
Catalog №	Type	Dimensions					Weight
		A	B	C-max	D	L	
4007.20.25.1000	CT-FL20-130x89x50P-40	65	89	25	50	130	2,710
4008.20.25.1000	CT-FL20-130x85x50-40		85	25	50	130	2,810
4009.20.25.1000	CT-FL20-130x85x80-40			25	80	130	3,200
4010.20.35.1000	CT-FL20-170x85x100-40			35	100	170	3,500
4011.20.25.1000	CT-FL20-170x85x120-40			25	120	170	3,900
4012.20.00.1000	specjal						

Towing trolley

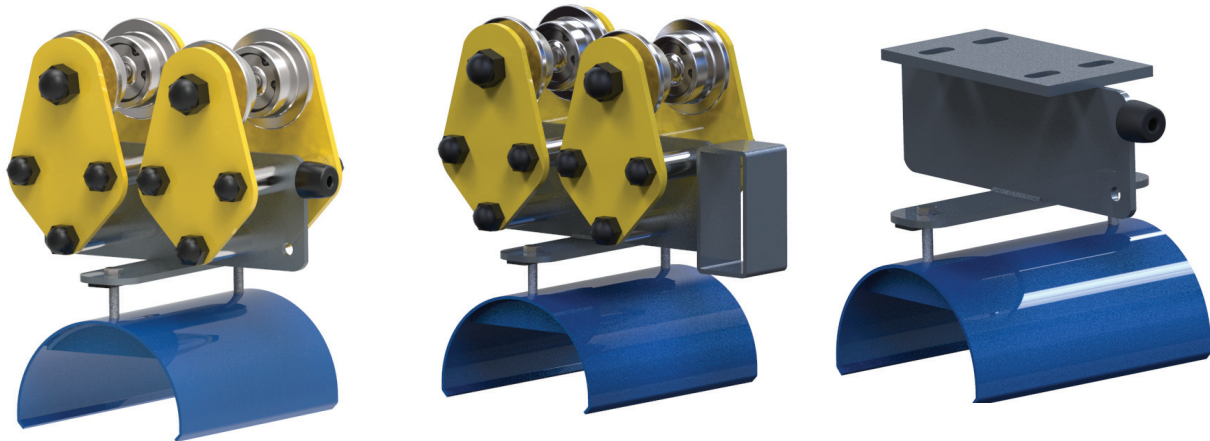


Catalog №	Type	Dimensions					Weight
		A	B	C-max	D	L	
4007.21.25.1000	CTT-FL20-130x89x50P-40	65	89	25	50	130	3,090
4008.21.25.1000	CTT-FL20-130x85x50-40			25	50	130	3,190
4009.21.25.1000	CTT-FL20-130x85x80-40			25	80	130	3,580
4010.21.35.1000	CTT-FL20-170x85x100-40			35	100	170	3,780
4011.21.25.1000	CTT-FL20-170x85x120-40			25	120	170	4,180
4012.21.00.1000	specjal						

Terminal clip



Catalog №	Type	Dimensions					Weight
		A	B	C-max	D	L	
4007.22.25.0000	CTE-FL20-130x89x50P-00	65	89	25	50	130	1,020
4008.22.25.0000	CTE-FL20-130x85x50-00			25	50	130	1,120
4009.22.25.0000	CTE-FL20-130x85x80-00			25	80	130	1,200
4010.22.35.0000	CTE-FL20-170x85x100-00			35	100	170	1,740
4011.22.25.0000	CTE-FL20-170x85x120-00			25	120	170	2,140
4012.22.00.0000	specjal						



Functionality - For the production of cable festoon systems for I-beam types accordant GOST, IPE, INP

Material:

Case	Zinc-galvanized steel S355, Powder painting
Case	RAL 7012
Roller fastening	RAL 1021
Saddle	RAL 5010
	Can be produced of stainless or acid-resistant steel
Rollers	High-strength steel, galvanized
Bearing	spherical ball bearing
Rollers	High-strength steel, galvanized
Bolt	joint Metric system
Seals	Rubber EPDM
End	cap PCV
Saddle	Zinc-galvanized steel

Technical characteristics:

Maximum load	50 kg
Travel speed	90 m/min
Operating temperature	- 30 ° C and above. Possibly from -40 ° C and below
Min. dimension of beam	-100

Please, notice,

RM International Group Sp. o.o. reserves the right to introduce modifications into design of any element.

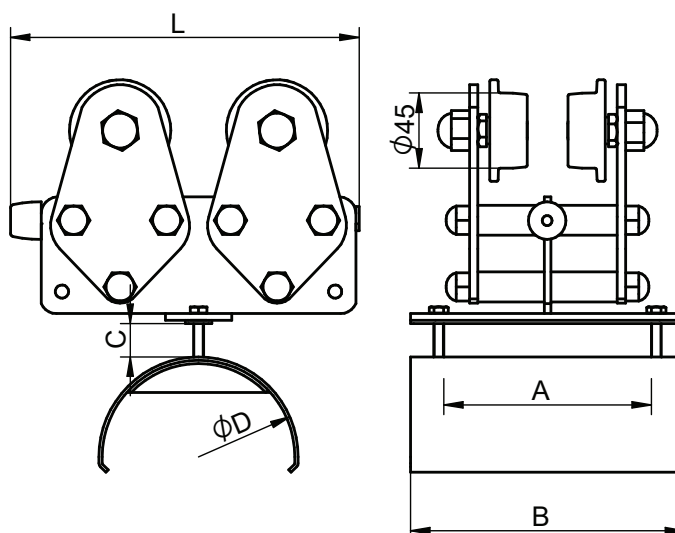
CT-FL30-200x165x120-45

CT-FL Type - Cable trolley for flat cable
 30 model "30"
 200 complete length of cable trolley
 165 width of saddle
 120 diameter of saddle
 120 diameter of saddle
 45 diameter of roller 45 mm

Catalog N° 4013.30.35.2000

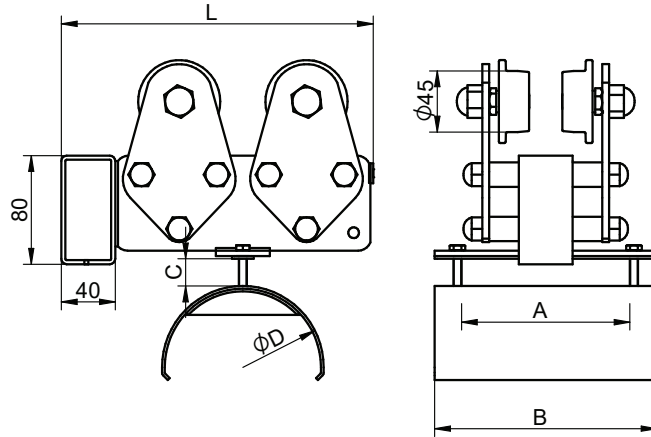
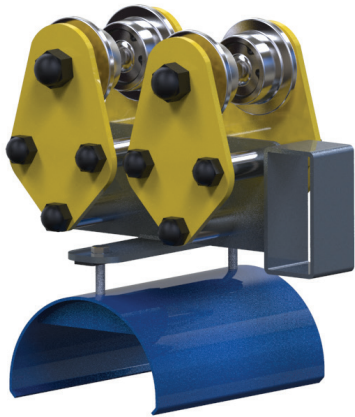
40 Series N°
 13 consecutive catalog N°
 30 Cable trolley – model 30
 31 Towing trolley 31
 32 Terminal clip
 35 max height of cables package (mm)
 2 number diameter of roller 45 mm
 000 without additory rollers

Cable trolley



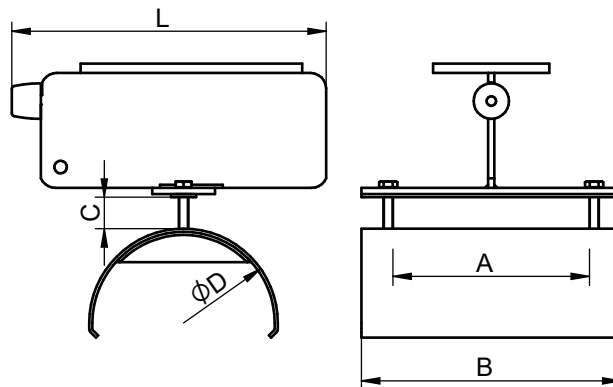
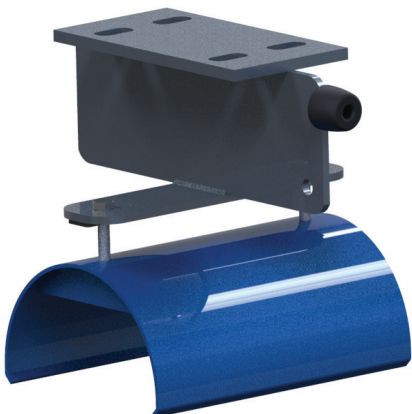
Catalog N°	Type	Dimensions					Weight
		A	B	C-max	D	L	
4013.30.35.2000	CT-FL30-200x165x120-45	125	165	35	120	200	4,180
4014.30.35.2000	CT-FL30-250x165x160-45			35	160	250	4,510
4015.30.25.2000	CT-FL30-250x165x200-45			25	200	250	5,010
4016.30.00.2000	specjal						

Towing trolley



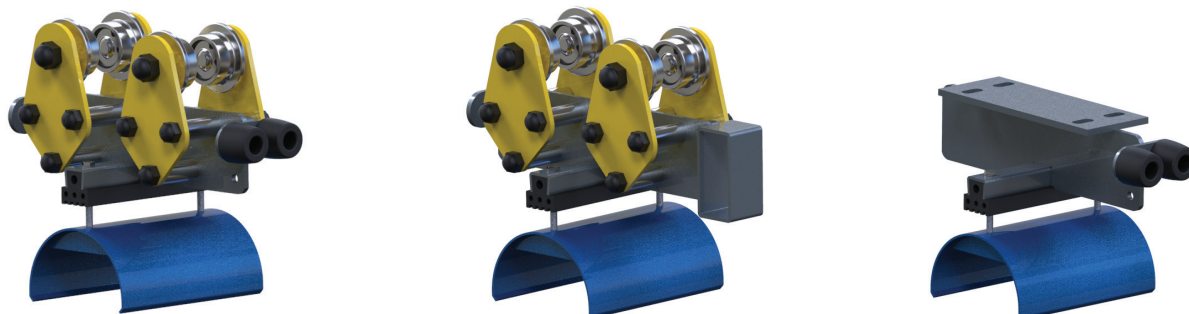
Catalog №	Type	Dimensions					Weight
		A	B	C-max	D	L	
4013.31.35.2000	CTT-FL30-200x165x120-45	125	165	35	120	200	4,550
4014.31.35.2000	CTT-FL30-250x165x160-45			35	160	250	5,020
4015.31.25.2000	CTT-FL30-250x165x200-45			25	200	250	5,520
4016.31.00.2000	specjal						

Terminal clip



Catalog №	Type	Dimensions					Weight
		A	B	C-max	D	L	
4013.32.35.0000	CTE-FL30-200x165x120-00	125	165	35	120	200	2,150
4014.32.35.0000	CTE-FL30-250x165x160-00			35	160	250	2,210
4015.32.25.0000	CTE-FL30-250x165x200-00			25	200	250	2,710
4016.32.00.0000	specjal						

MODEL FL-40



Functionality - For the production of cable festoon systems for I-beam types accordant GOST, IPE, INP

Material:

Case	Zinc-galvanized steel S355, Powder painting
Case	RAL 7012
Roller fastening	RAL 1021
Saddle	RAL 5010
	Can be produced of stainless or acid-resistant steel
Rollers	High-strength steel, galvanized
Bearing	spherical ball bearing
Roller	axis Zinc-galvanized steel
Bolt	joint Metric system
Seals	Rubber EPDM
End	cap PCV
Saddle	Zinc-galvanized steel

Technical characteristics:

Maximum load	75 kg
Travel speed	90 m/min
Operating temperature	- 30 ° C and above. Possibly from -40 ° C and below
Min. dimension of beam	- 100

Please, notice,

RM International Group Sp. o.o. reserves the right to introduce modifications into design of any element.

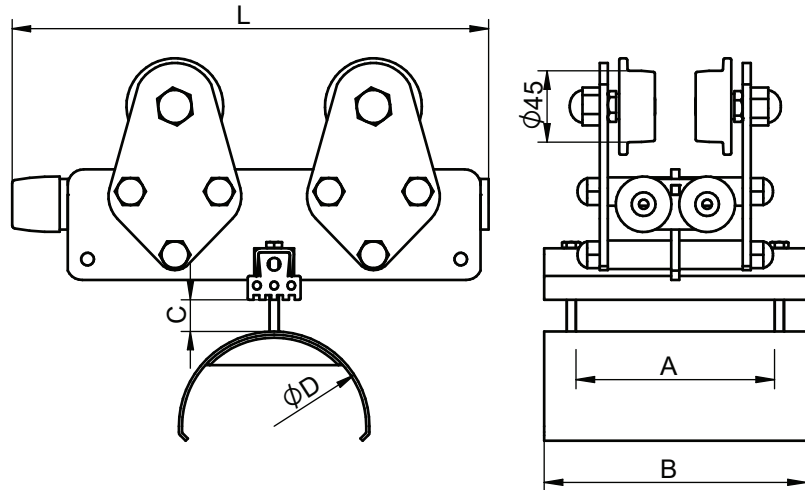
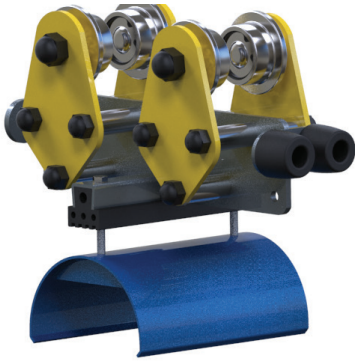
CT-FL40-300x165x120-45

CT-FL Type - Cable trolley for flat cable
 10 model "40"
 130 complete length of cable trolley
 89 width of saddle
 50 diameter of saddle
 45 diameter of roller 45 mm

Catalog N^o **4017.40.55.2000**

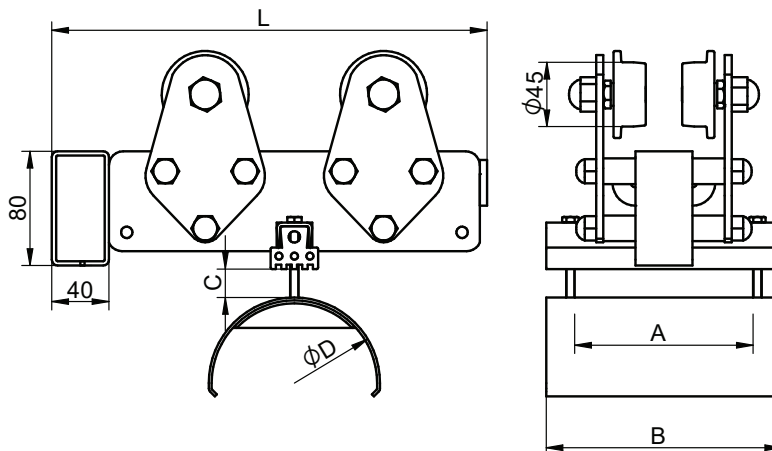
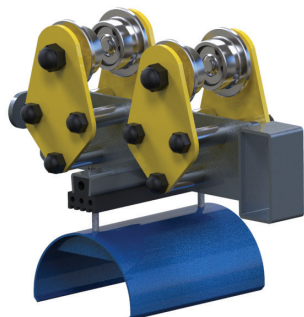
40 Series N^o
 17 consecutive catalog N^o
 40 Cable trolley – model 40
 41 Towing trolley 41
 42 Terminal clip
 55 max height of cables package (mm)
 2 number diameter of roller 45 mm
 000 without additory rollers

Cable trolley



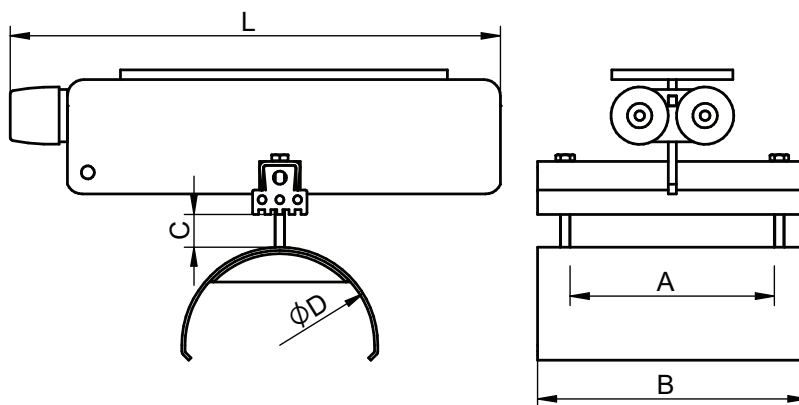
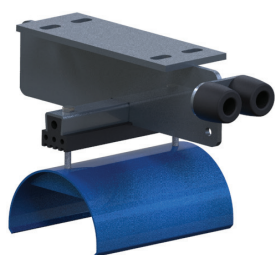
Catalog N ^o	Type	Dimensions					Weight
		A	B	C-max	D	L	
4017.40.55.2000	CT-FL40-300x165x120-45	125	165	55	120	300	4,240
4018.40.50.2000	CT-FL40-300x205x160-45	165	205	45	160	300	4,700
4019.40.45.2000	CT-FL40-300x230x200-45	190	230	45	200	300	6,520
4020.40.00.2000	specjal						

Towing trolley



Catalog №	Type	Dimensions					Weight
		A	B	C-max	D	L	
4017.41.55.2000	CTT-FL40-300x165x120-45	125	165	55	120	300	4,720
4018.41.50.2000	CTT-FL40-300x205x160-45	165	205	50	160	300	5,180
4019.41.45.2000	CTT-FL40-300x230x200-45	190	230	45	200	300	6,800
4020.41.00.2000	specjal						

Terminal clip



Catalog №	Type	Dimensions					Weight
		A	B	C-max	D	L	
4017.42.55.0000	CTE-FL40-300x165x120-00	125	165	55	120	300	1,870
4018.42.50.0000	CTE-FL40-300x205x160-00	165	205	50	160	300	2,330
4019.42.45.0000	CTE-FL40-300x230x200-00	190	230	45	200	300	3,600
4020.42.00.0000	specjal						

