



RM INTERNATIONAL GROUP SP. Z O.O.

CABLE TROLLEYS AND COMPONENTS C SERIE





Energy and data transmission systems for cranes and all types of mobile equipment and machinery.



Festoon system, cable trolleys and accessories

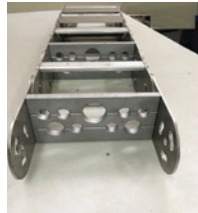
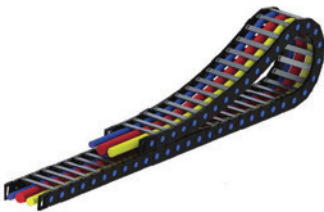
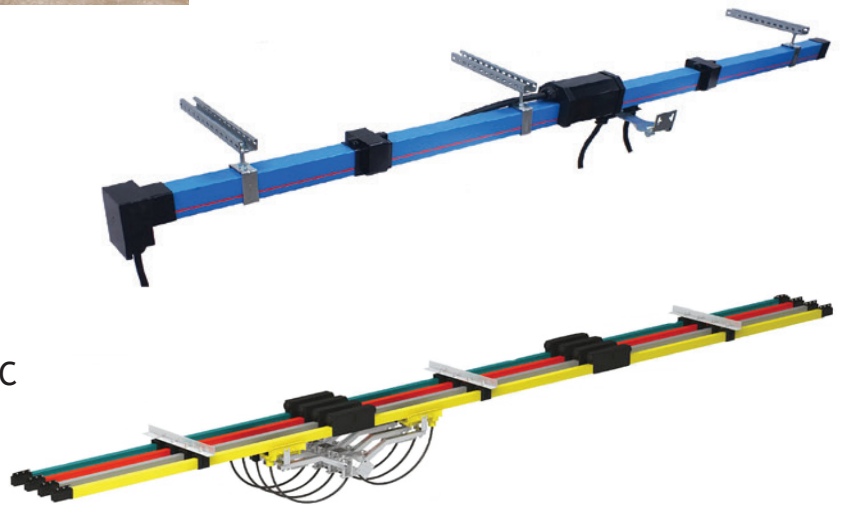
- Series A, B (profile 30x32)
- Series C (profile 40x40)
- Series RP
- Series FL
- Series RD
- Large cable trolleys

Power and control cables

- Flat
- Round

Conductor bar

- Open conductor rails - type RMSO
- Enclosed conductor rails - type RMBC



Drag chain

- Plastic
- Metallic



Crane runway

Cable reels



Crane cabins



Dear partners!

Here are our new catalogs of our products.

They are the result of our cooperation with partners in Poland, countries of Eastern and Western Europe and the countries of the Customs Union: Russia, Kazakhstan, Belarus.

We always listen out to you needs and desires and respond to you wishes.

We have also offered some innovative solutions for the ease of installation and reduction of equipment costs.

We always offer our guarantee on delivery of all power and data transmission systems for cranes and for all other types of mobile equipment and machinery:

Cable trolleys

Light series load up to 10 kg for the trolley

Medium series load up to 65 kg for the trolley

Heavy series load up to 150 kg for the trolley

Heavyweight series load on the trolley above 150 kg

With electrodrive for long runs

The conductor bars from 35A to 5000A

Multiterminal conductor bars

System of contact monorail

Drag chain systems complete with trays and cables as a unit

Plastic

Metal

Cable reels

Additionally supply:

Rail fastening system: Claws and crane rail pad RAY PAD

Comfortable crane cabs

We recommend high quality cables in accordance with your technical specifications for all our systems.

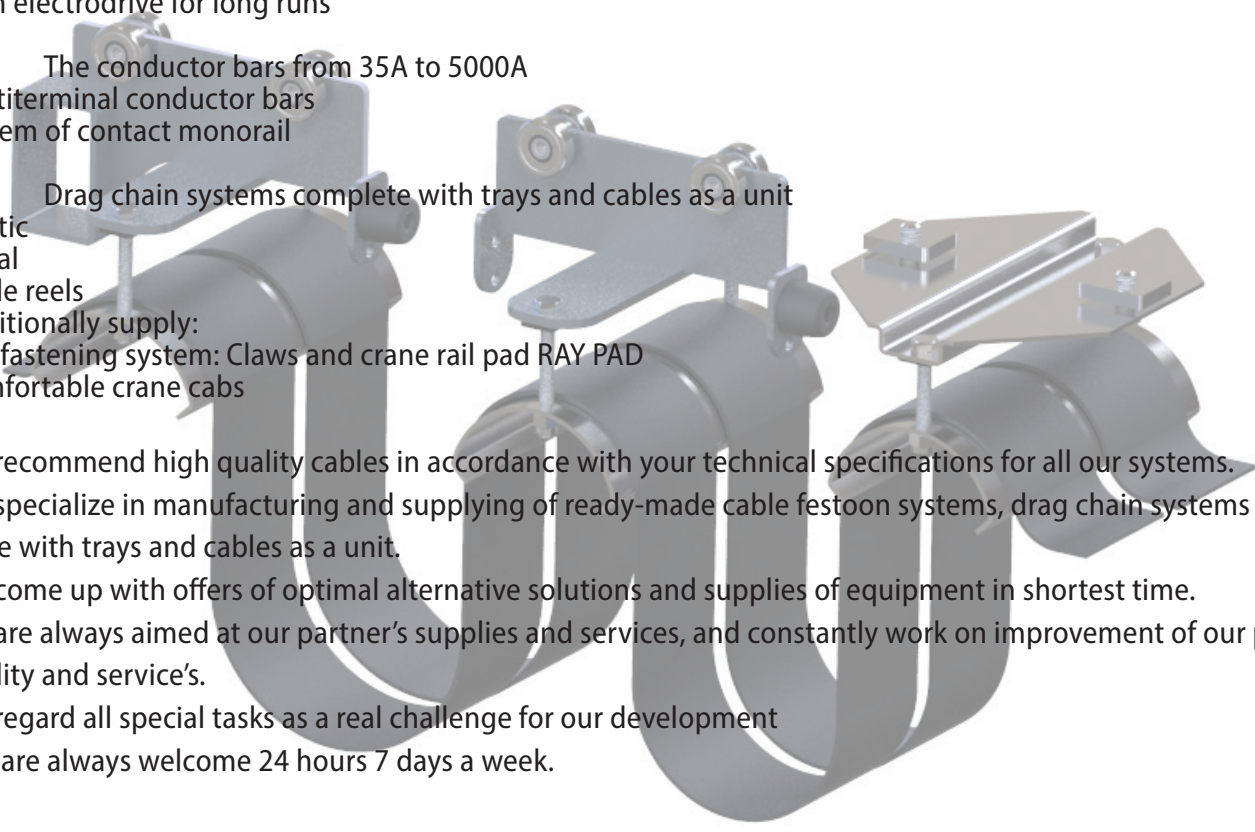
We specialize in manufacturing and supplying of ready-made cable festoon systems, drag chain systems complete with trays and cables as a unit.

We come up with offers of optimal alternative solutions and supplies of equipment in shortest time.

We are always aimed at our partner's supplies and services, and constantly work on improvement of our product quality and service's.

We regard all special tasks as a real challenge for our development

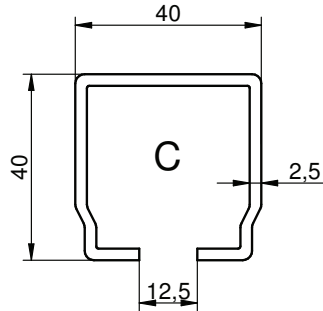
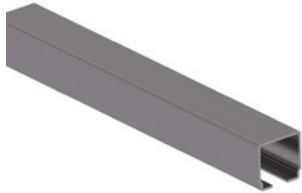
You are always welcome 24 hours 7 days a week.





Profile of types "C"

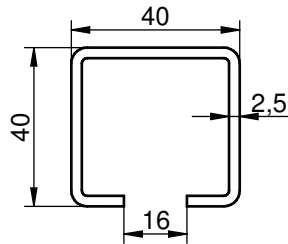
Material: cold-rolled steel, galvanized



Catalogue number	Type	L mm	Weight (kg/mb)
200780	C/4 - straight line	4000	2,500
200980	C/6 - straight line	6000	2,500
200780-S	specjal	L=	2,500
200780-L	radial	R=	2,500

Bracket RW

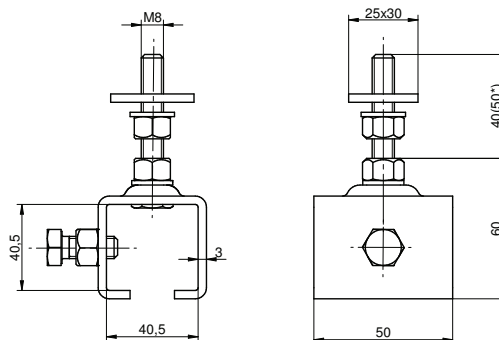
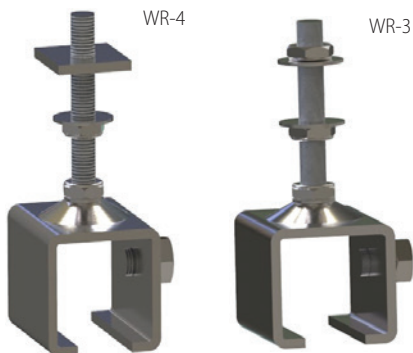
Material: cold-rolled steel, galvanized



Catalogue number	Type	L (mm)	Weight (kg/pcs)
200781	RWC-1	100	0,250
200782	RWC-2	200	0,500
200783	RWC-3	300	0,750
200784	RWC-4	400	1,000
200785	RWC-5	500	1,250
200786	RWC-6	600	1,500
200787	RWC-7	700	1,750
200788	RWC-8	800	2,000
200789	RWC-9	900	2,250
2007810	RWC-10	1000	2,500
2007811	RWC-11	1100	2,750
2007812	RWC-12	1200	3,000
200781-S	specjal		

Adjustable hangerWR

Material: steel galvanized



Catalogue number	Type	Weight (kg/pcs)
200773	WR-3	0,390
200774	WR-4	0,430

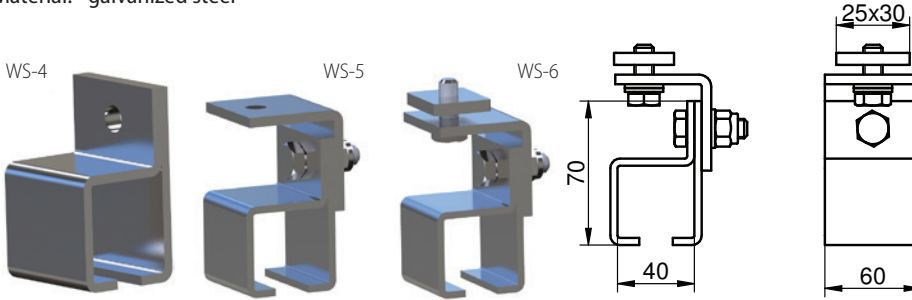


Profile "C" set of elements



Hanger WS

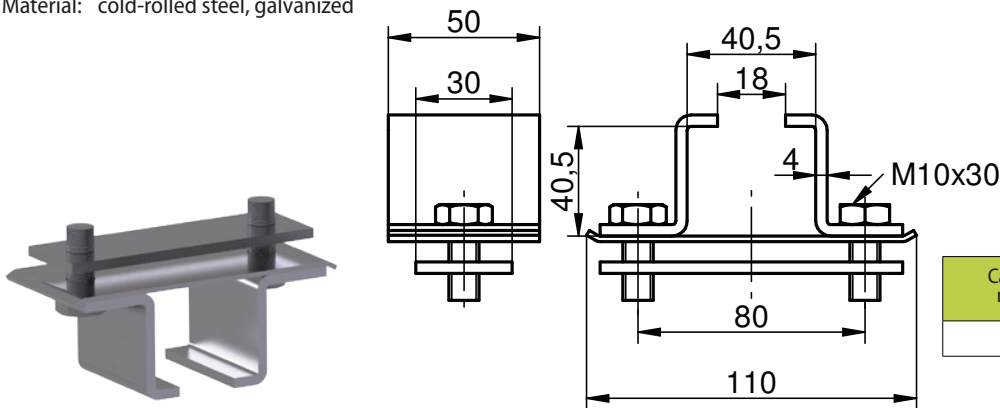
Material: galvanized steel



Catalogue number	Type	Weight (kg/pcs)
200775	WS-4	0,270
200776	WS-5	0,498
2 00777	WS-6	0,595

Fastening of the profile MS

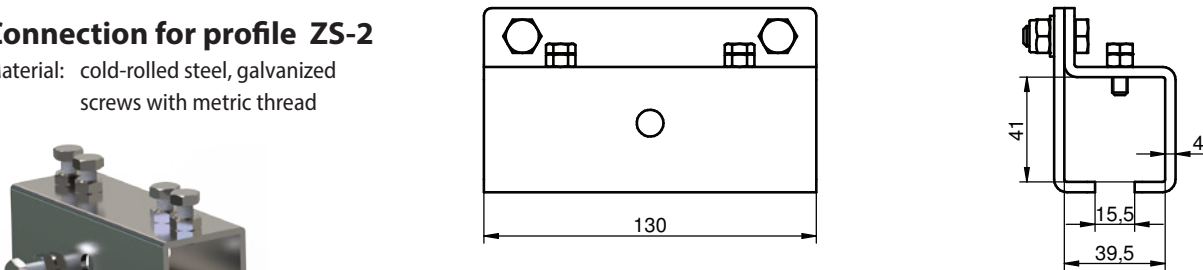
Material: cold-rolled steel, galvanized



Catalogue number	Type	Weight (kg/pcs)
200796	MS-C	0,560

Connection for profile ZS-2

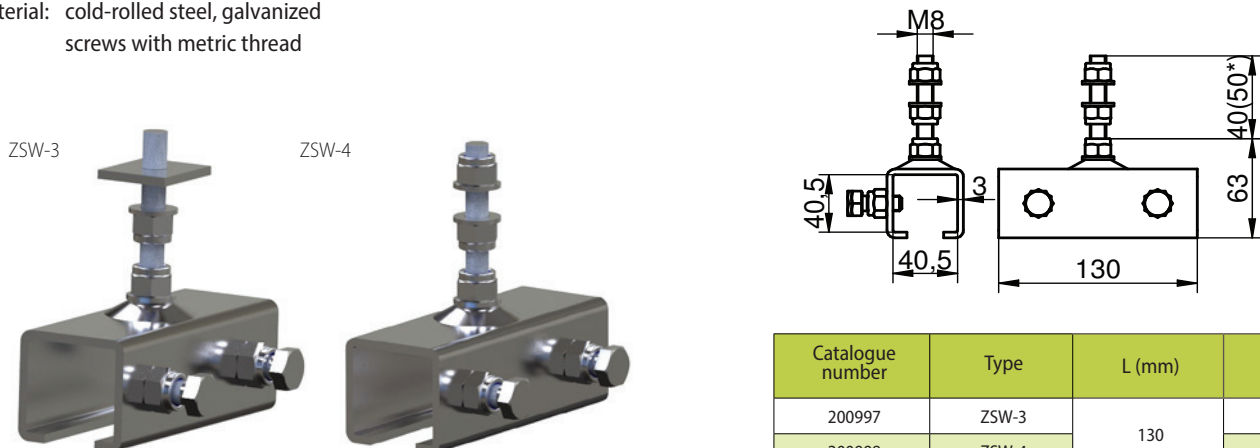
Material: cold-rolled steel, galvanized
screws with metric thread



Catalogue number	Type	L (mm)	Weight
200797	ZS-2	130	(kg/pcs)

Connection with fastening for profile ZSW

Material: cold-rolled steel, galvanized
screws with metric thread

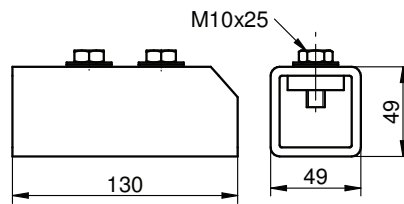
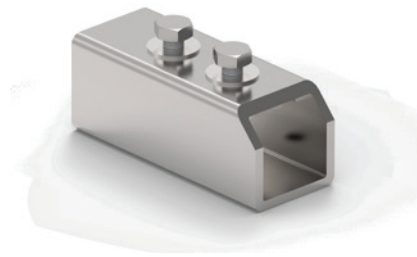


Catalogue number	Type	L (mm)	Weight
200997	ZSW-3	130	0,790
200998	ZSW-4		0,710



Support of bracket for welding KS-2

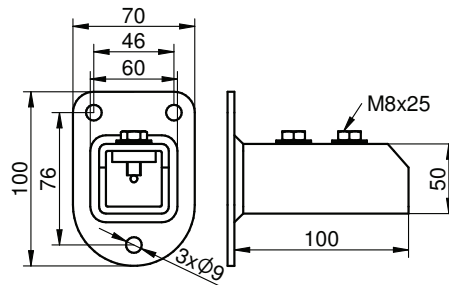
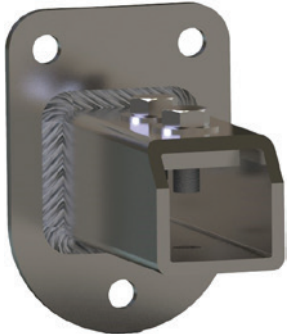
Material: cold-rolled steel, galvanized
Screws with metric thread



Catalogue number	Type	Weight (kg/pcs)
200790	KS-2	0,910

Support with stand KP-2

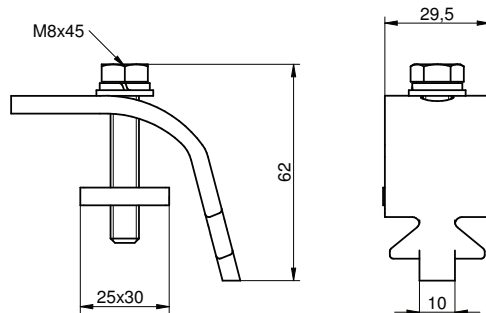
Material: cold-rolled steel, galvanized
Screws with metric thread



Catalogue number	Type	Weight (kg/pcs)
200790-P	KP-2	1,590

Claw DP-1

Material: cold-rolled steel, galvanized
screw and screw-nut with metric thread



Catalogue number	Type	Weight (kg/pcs)
100770	DP-1	0,140

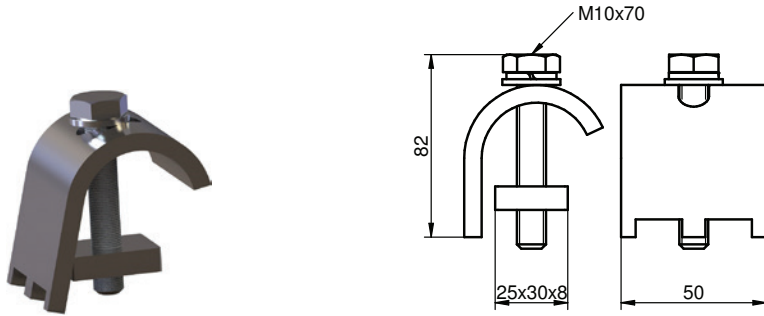


Profile "C" set of elements

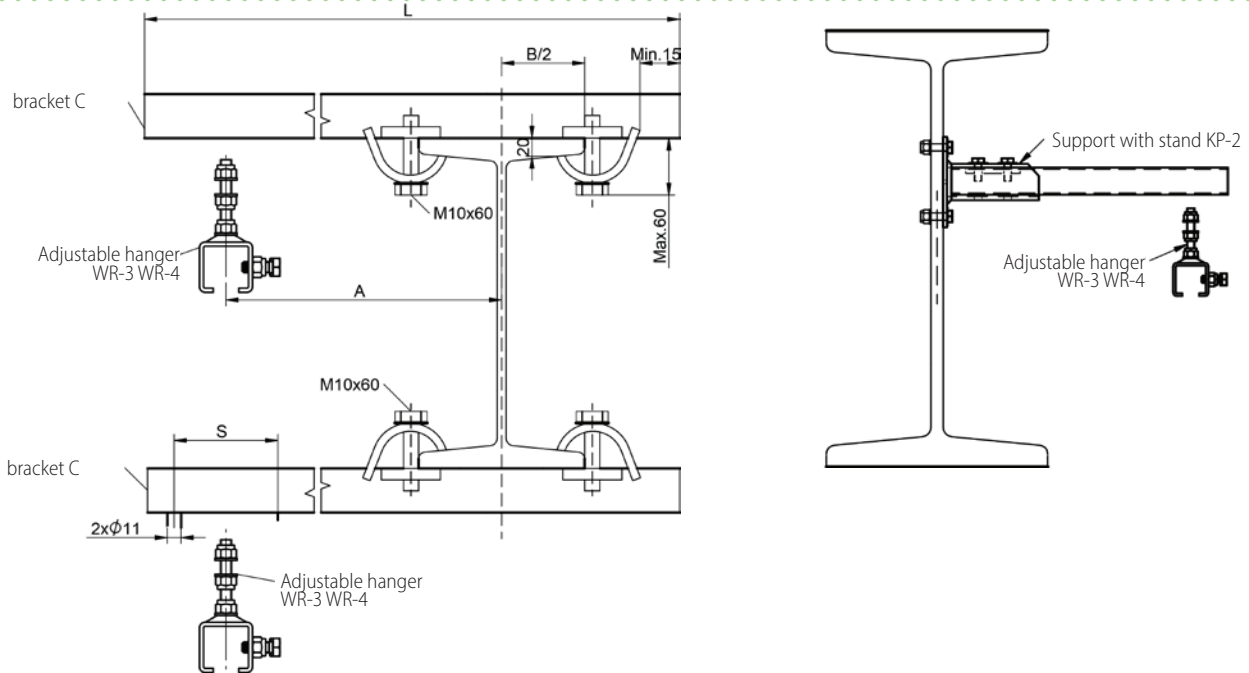


Claw DP-2

Material: cold-rolled steel, galvanized
screw and screw-nut with metric thread

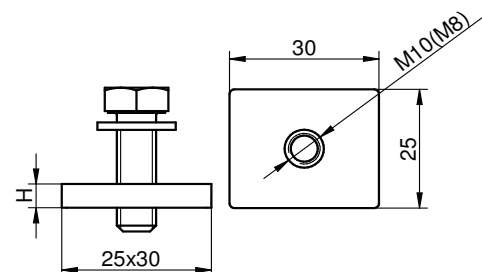
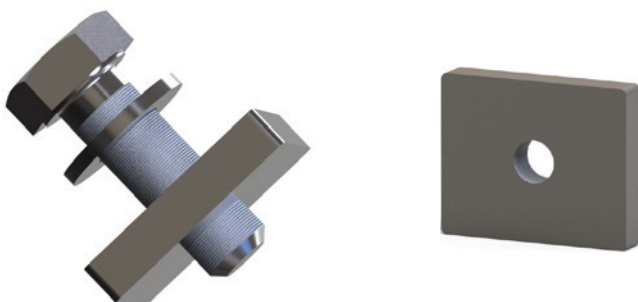


Catalogue number	Type	Weight (kg/pcs)
100970	DP-2	0.278



Special nut NS

Material: steel
screw thread M8
screw thread M10

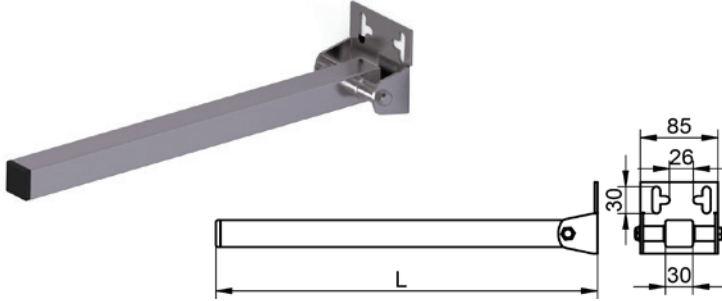


Catalogue number	Type	H	M	Weight (kg/pcs)
100844	NS-1	6	8	0.041
100845	NS-2	8	10	0.055



Tow arm flexible ZW

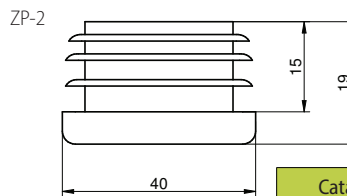
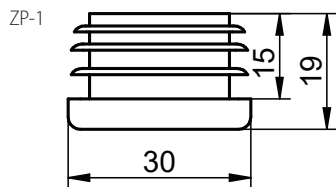
Material: cold-rolled steel, galvanized
screws and screw-nuts with metric thread



Catalogue number	Type	L (mm)	Weight (kg/pcs)
100771	ZW-1	400	1,000
100873	ZW-2	500	1.250
100772	ZW-3	600	1.500

Joint cap ZP

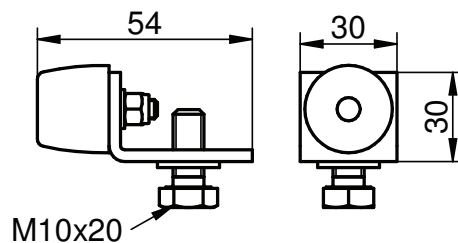
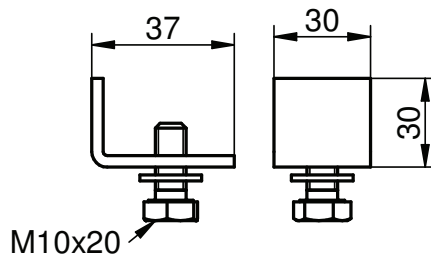
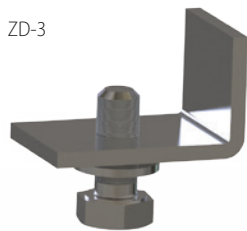
Material: PCV



Catalogue number	Type	Weight (kg/pcs)
100791	ZP-1	0,007
100800	ZP-2	0,010

Bumper ZD

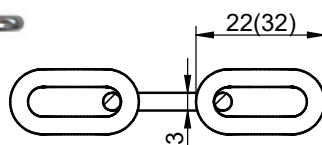
Material: cold-rolled steel, galvanized
screws and screw-nuts with metric thread
rubber EPDM



Catalogue number	Type	Weight (kg/pcs)
200901	ZD-3	0,089
200902	ZD-4	0,118

Chain LC

Material: galvanized steel



Catalogue number	Type	Waga (kg/m)
100903	LC-1	0,110
100792	LC-3	0,165
100804	LC-5	0,295

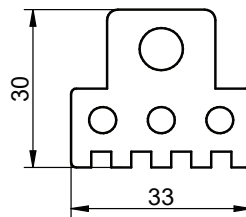
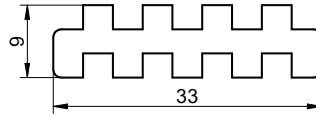


Profile "C" set of elements



Sealing strip TG

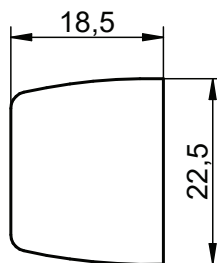
Material: rubber EPDM



Catalogue number	Type	Weight (kg/m)
100846	TG-1	0.150
100847	TG-2	0.450

Rubber bumper ZG

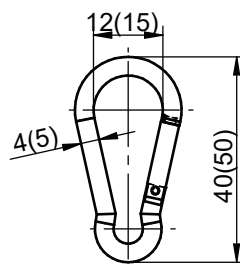
Material: rubber EPDM



Catalogue number	Type	Weight (kg/pcs)
100860	ZG-1	0.010

Spring hook

Material: galvanized steel

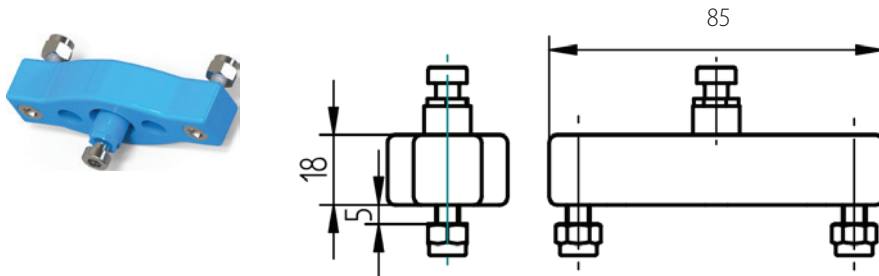


Catalogue number	Type	Weight (kg/pcs)
100793	KB-4	0,008
100803	KB-5	0.015

Profile "C" set of elements

Hinge joint of round cables WEK

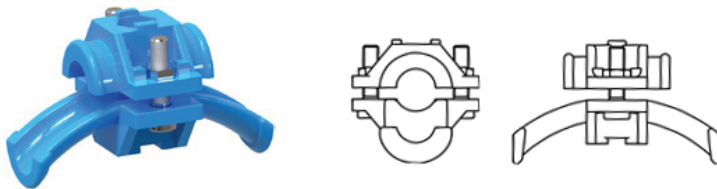
Material: polyamide



Catalogue number	Type	Weight (kg/pcs)
100904	WEK-1	0.045

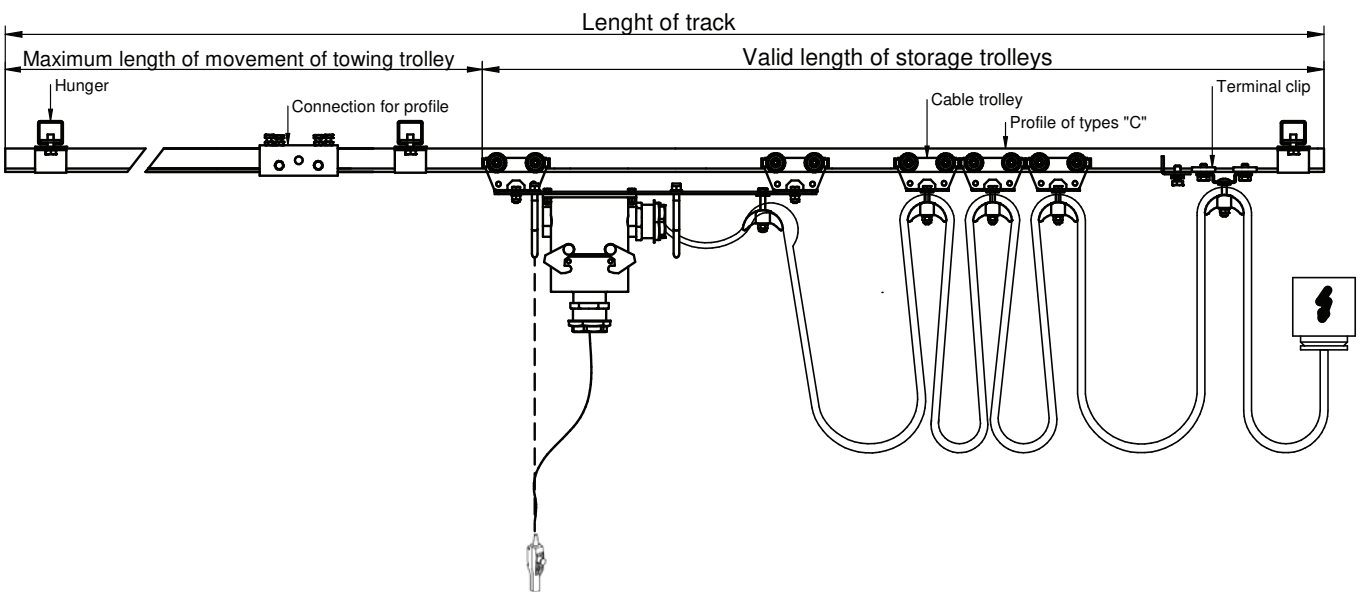
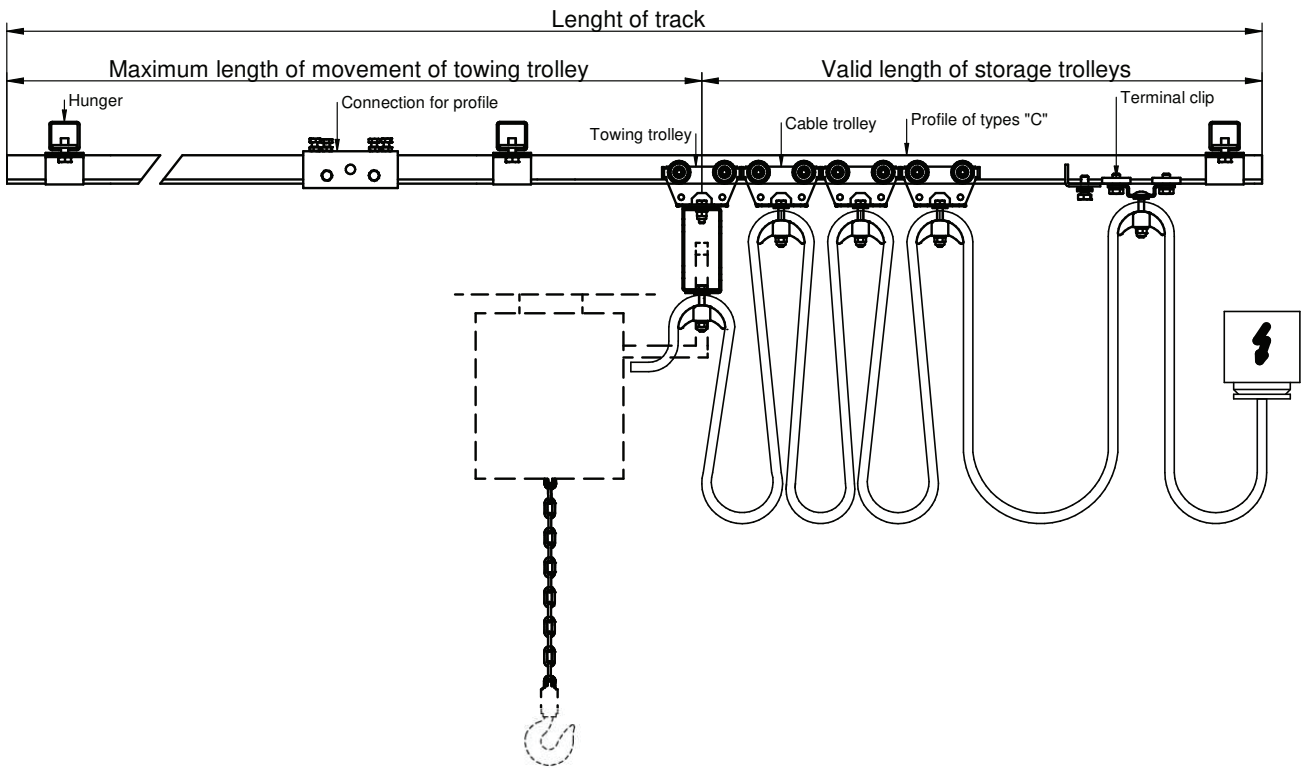
Hoop of round cables WEK

Material: polyamide



Catalogue number	Type	Ø	Weight (kg/pcs)
100905	WEK-2	10-16	0.032
100906	WEK-3	17-25	0.058
100907	WEK-4	26-36	0.085
100909	WEK-5	14-32	0.170







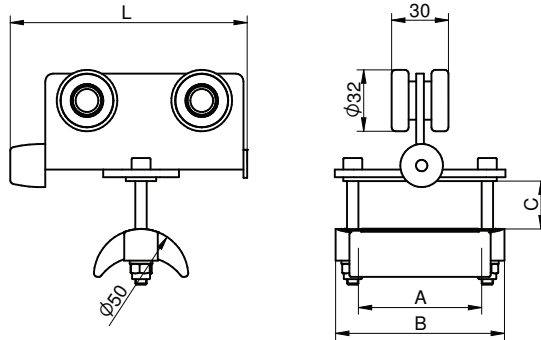


SERIES C-10



Cable trolley

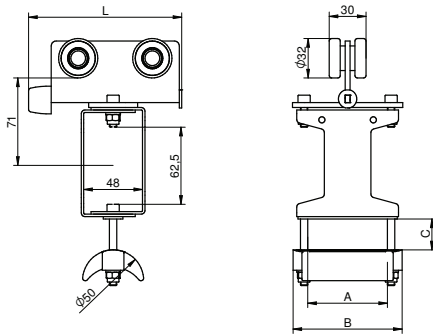
Material: metal case
polyamide saddle
load up to 20 kg



Catalogue number	Type	Dimensions					Weight
		A	B	C-max	D	L	
2001.10.50	CT-C/10-85x89x50	65	89	20	50	85	0.410
2002.10.50	CT-C/10-105x89x50			20	50	105	0.450
2003.10.00	specjal						

Towing trolley

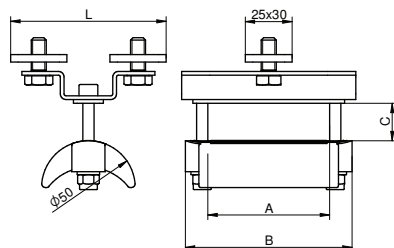
Material: metal case
Metal
polyamide saddle
load up to 20kg



Catalogue number	Type	Dimensions					Weight
		A	B	C-max	D	L	
2001.11.50	CTT-C/10-85x89x50	65	89	20	50	85	0.515
2002.11.50	CTT-C/10-105x89x50			20	50	105	0.565
2003.11.50	specjal						

Terminal clip

Material: metal case
polyamide saddle
load up to 20kg



Catalogue number	Type	Dimensions					Weight
		A	B	C-max	D	L	
2001.12.50	CTE-C/10-85x89x50	65	89	20	50	85	0.286
2002.12.50	specjal						



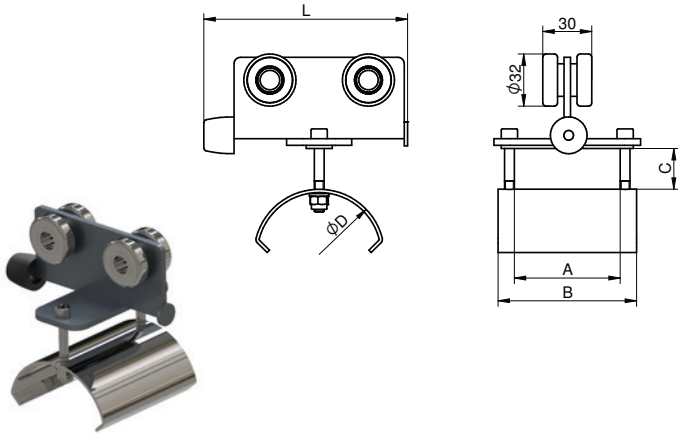


SERIA C-20



Cable trolley

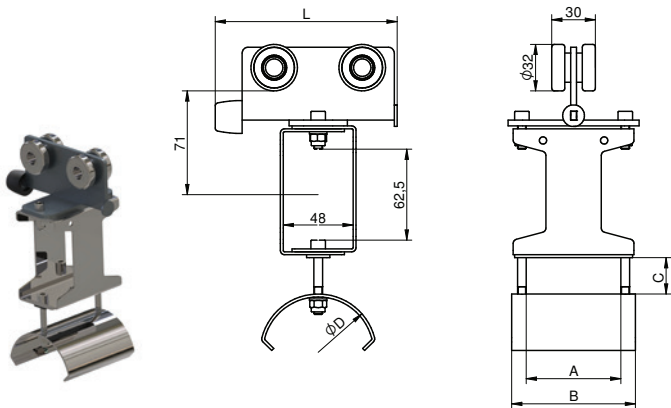
Material: metal case
metal saddle
load up to 25kg



Catalogue number	Type	Dimensions					Weight
		A	B	C-max	D	L	
2004.20.50	CT-C/20-105x85x50	65	85	25	50	105	0.598
2005.20.80	CT-C/20-125x85x80			20	80	125	0.640
2006.20.10	CT-C/20-160x85x100			25	100	160	1.040
2007.20.12	CT-C/20-160x85x120			20	120	160	1.460
2008.20.00	specjal						

Towing trolley

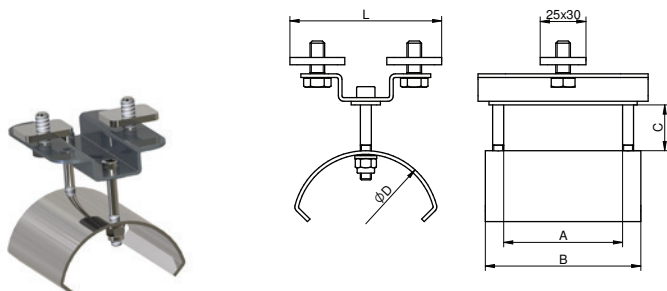
Material: metal case
metal
metal saddle
load up to 25kg



Catalogue number	Type	Dimensions					Weight
		A	B	C-max	D	L	
2004.21.50	CTT-C/20-105x85x50	65	85	25	50	105	0.748
2005.21.80	CTT-C/20-125x85x80			20	80	125	0.790
2006.21.10	CTT-C/20-160x85x100			25	100	160	1.190
2007.21.12	CTT-C/20-160x85x120			20	120	160	1.610
2008.21.00	specjal						

Terminal clip

Material: metal case
metal saddle
load up to 25kg



Catalogue number	Type	Dimensions					Weight
		A	B	C-max	D	L	
2004.22.50	CTE-C/20-105x85x50	65	85	25	50	105	0.314
2005.22.80	CTE-C/20-125x85x80			20	80	125	0.361
2006.22.10	CTE-C/20-160x85x100			25	100	160	1.285
2007.22.12	CTE-C/20-160x85x120			25	120	160	1.500
2008.22.00	specjal						



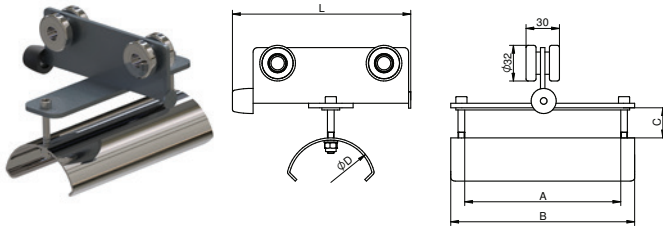


SERIES C-30



Cable trolley

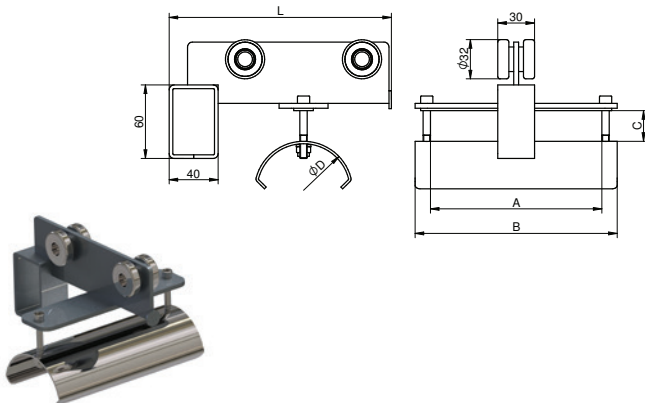
Material: metal case
metal saddle
load up to 32kg



Catalogue number	Type	Dimensions					Weight
		A	B	C-max	D	L	
2009.30.80	CT-C/30-160x160x80	135	160	25	80	160	1.060
2010.30.10	CT-C/30-160x160x100			25	100	160	1.120
2011.30.12	CT-C/30-200x160x120			25	120	200	1.580
2012.30.16	CT-C/30-200x160x160			20	160	200	1.760
2013.30.00	specjal						

Towing trolley

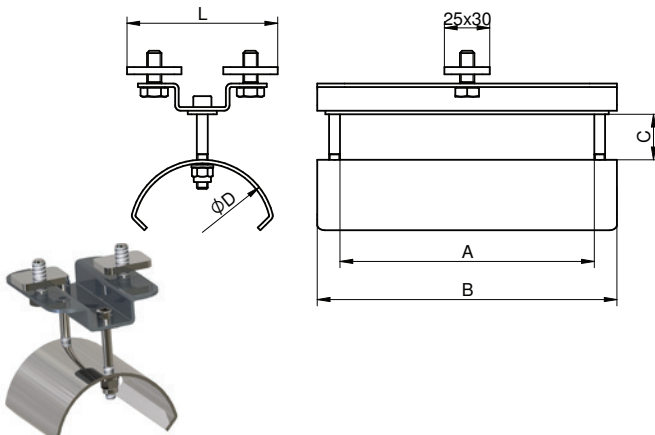
Material: metal case
metal saddle
load up to 32kg



Catalogue number	Type	Dimensions					Weight
		A	B	C-max	D	L	
2009.31.80	CTT-C/30-160x160x80	135	160	25	80	160	1.210
2010.31.10	CTT-C/30-160x160x100			25	100	160	1.270
2011.31.12	CTT-C/30-200x160x120			25	120	200	1.740
2012.31.16	CTT-C/30-200x160x160			20	160	200	1.920
2013.31.00	specjal						

Terminal clip

Material: metal case
metal saddle
load up to 32kg



Catalogue number	Type	Dimensions					Weight
		A	B	C-max	D	L	
2009.32.80	CTE-C/30-160x160x80	135	160	25	80	160	1.235
2010.32.10	CTE-C/30-160x160x100			25	100	160	1.285
2011.32.12	CTE-C/30-200x160x120			25	120	200	1.500
2012.32.16	CTE-C/30-200x160x160			20	160	200	1.755
2013.32.00	specjal						



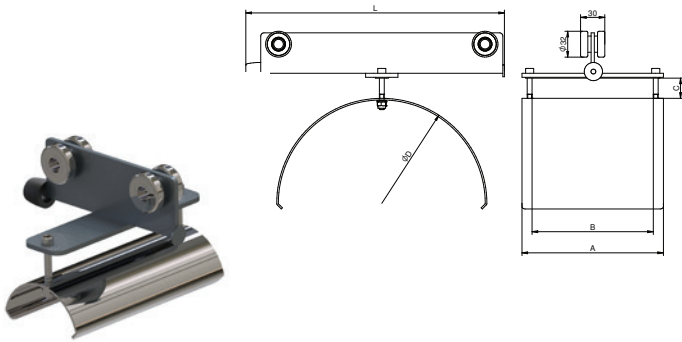


SERIES C-40



Cable trolley

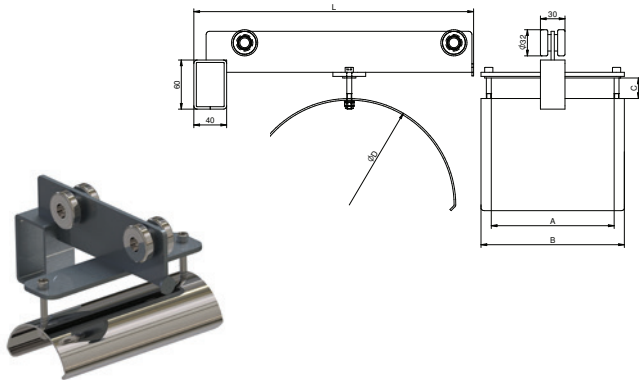
Material: metal case
metal saddle
load up to 32kg



Catalogue number	Type	Dimensions					Weight
		A	B	C-max	D	L	
2014.40.26	CT-C/40-320x175x260	130	175	25	260	320	2.930
2015.40.26	CT-C/40-320x205x260	160	205	25			3.210
2016.40.26	CTC/40-320x235x260	190	235	30			3.580
2017.40.00	specjal						

Towing trolley

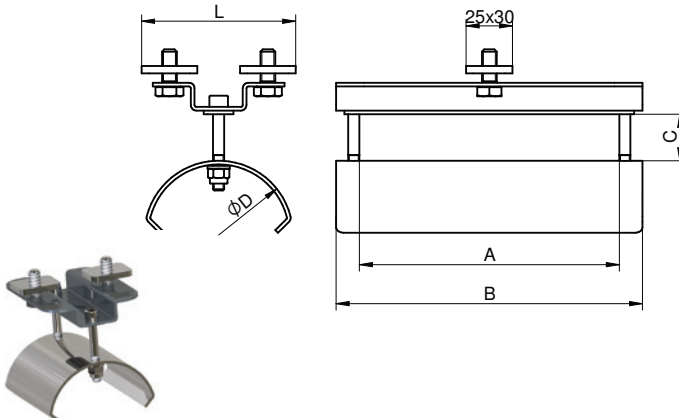
Material: metal case
metal saddle
load up to 32kg



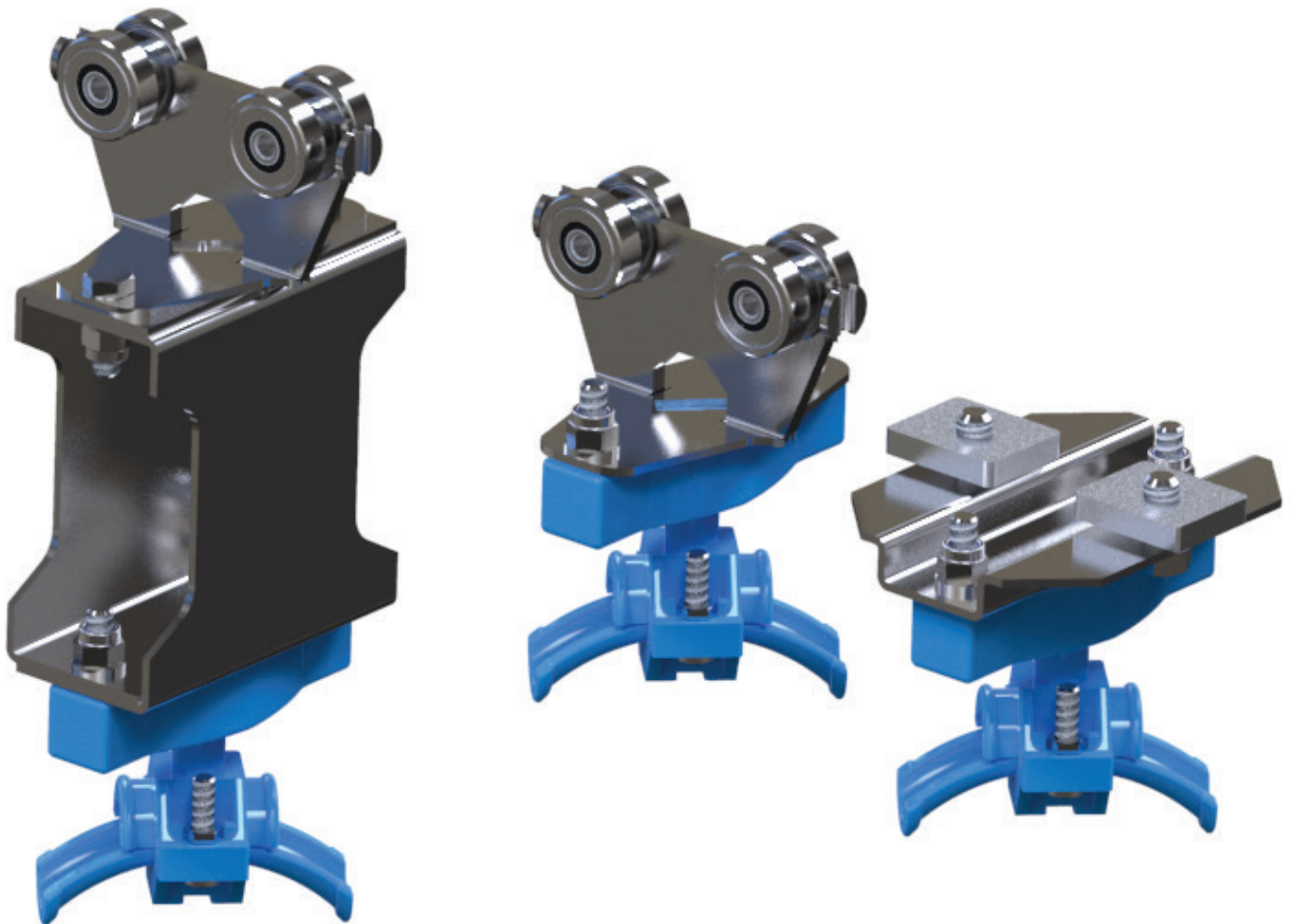
Catalogue number	Type	Dimensions					Weight
		A	B	C-max	D	L	
2014.41.26	CTT-C/40-320x175x260	130	175	25	260	320	3.180
2015.41.26	CTT-C/40-320x205x260	160	205	25			3.460
2016.41.26	CTTC/40-320x235x260	190	235	30			3.730
2017.41.00	specjal						

ZACISK KOŃCOWY

Material: metal case
metal saddle
load up to 32kg



Catalogue number	Type	Dimensions					Weight
		A	B	C-max	D	L	
2014.42.26	CTE-C/40-320x175x260	130	175	25	260	320	2.240
2015.42.26	CTE-C/40-320x205x260	160	205	25			2.760
2016.42.26	CTE-C/40-320x235x260	190	235	30			3.210
2017.42.00	specjal						



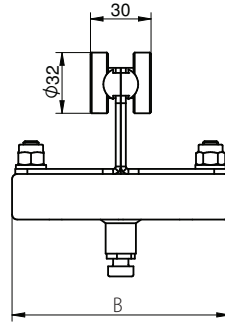
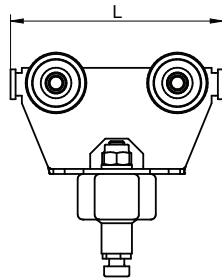


SERIES C-50



Cable trolley

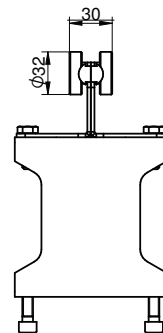
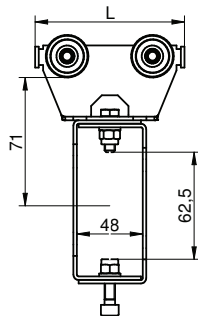
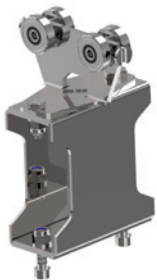
Material: metal case
Hoop of polyamide
load up to 20kg



Catalogue number	Type	Dimensions		Weight
		B	L	
2018.50.01	CT-RT/50-85	89	85	0.362
2019.50.02	CT-RT/50-105		105	0.394
2020.50.03	CT-RT/50-125		125	0.417
2021.50.00	specjal			

Towing trolley

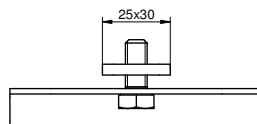
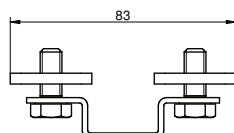
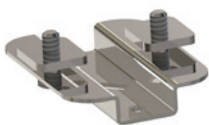
Material: metal case
metal
Hoop of polyamide
load up to 20kg



Catalogue number	Type	Dimensions		Weight
		B	L	
2018.51.01	CTT-RT/50-85	89	85	0.464
2019.51.02	CTT-RT/50-105		105	0.506
2020.51.03	CTT-RT/50-125		125	0.528
2021.51.00	specjal			

Terminal clip

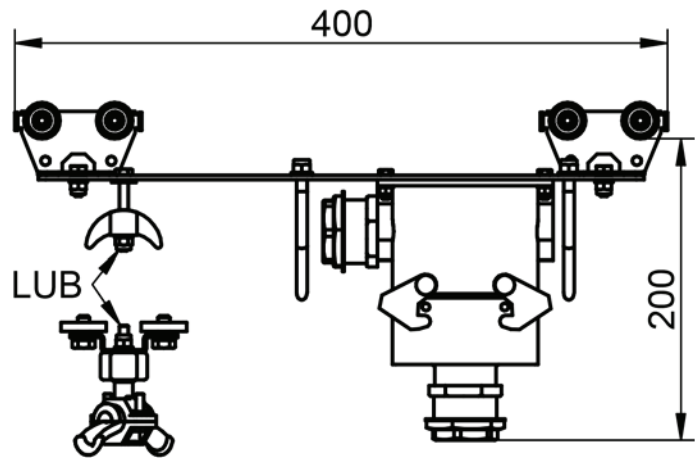
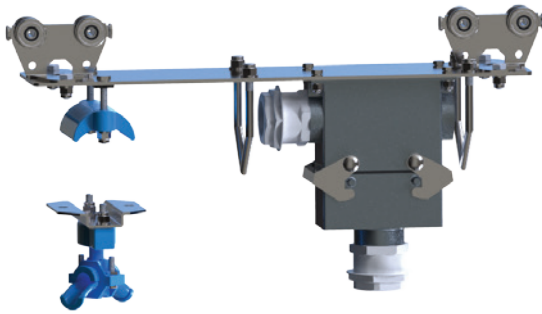
Material: metal case
hoop of polyamide
load up to 20kg



Catalogue number	Type	Dimensions		Weight
		B	L	
2018.52.01	CTE-RT/50-85	89	85	0.120
2019.52.02	specjal			



SERIES CS-60
Trolley for control panel

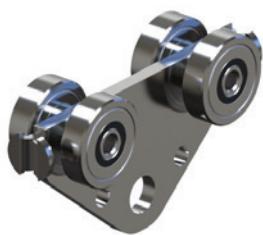
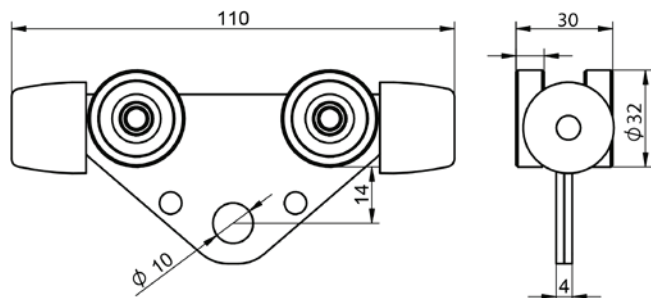


Catalogue number	Type	Weight
2022.60.01	specjal	

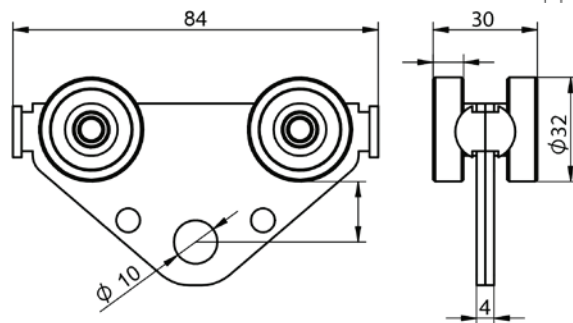
SERIES CS-61
Special trolley



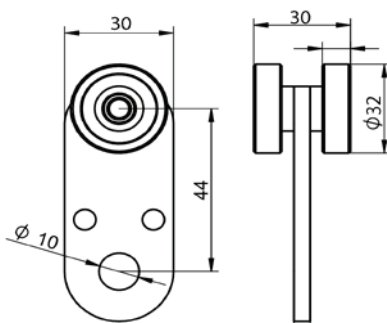
CS-61-2ZG



CS-61/2



CS-61/1



Catalogue number	Type	Weight
2023.60.01	CS-61/1	0,117
2024.60.02	CS-61/2	0,193
2025.60.02	CS-61/2ZG	0,223

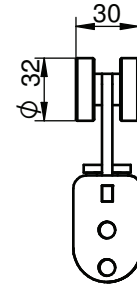
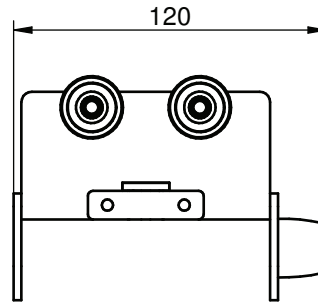


SERIES CS-70



Cable trolley

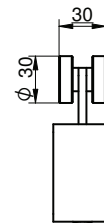
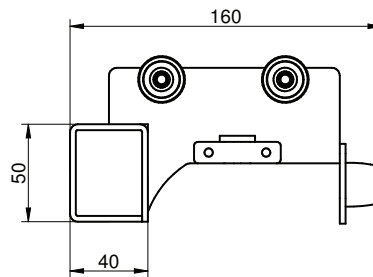
Material: metal case
Hoop of metal
load up to 20kg



Catalogue number	Type	Weight
2026.70.01	CT-RT/70-120	120

Towing trolley

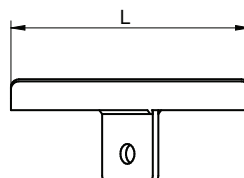
Material: metal case
metal
Hoop of metal
load up to 20kg



Catalogue number	Type	Weight
2026.71.01	CT-RT/70-120	120

Terminal clip

Material: metal case
hoop of polyamide
load up to 20kg



Catalogue number	Type	Weight
2026.72.01	CT-RT/70-120	120

Your best partner



RM International Group Sp. z o.o.
Wudzyn, ul. Lipowa 2, 86-022 Dobrcz, Polska
tel. +48 523 64 99 87
kom. +48 721 005 444
kom. +48 609 815 181
info@rm-intgroup.com
www.rm-intgroup.com
<https://www.facebook.com/rmintgroup>

Представитель в РФ:
ООО "КРАМ"
236006. г. Калининград
ул. Октябрьская, д.8, каб. 416
тел. +7 4012 307 057
тел. +7 4012 307 037
моб. +7 9062 335 232
info@kramik-ltd.ru
www.kramik-ltd.ru
<https://www.facebook.com/kram39.ru>